



STRIPING MODIFICATIONS



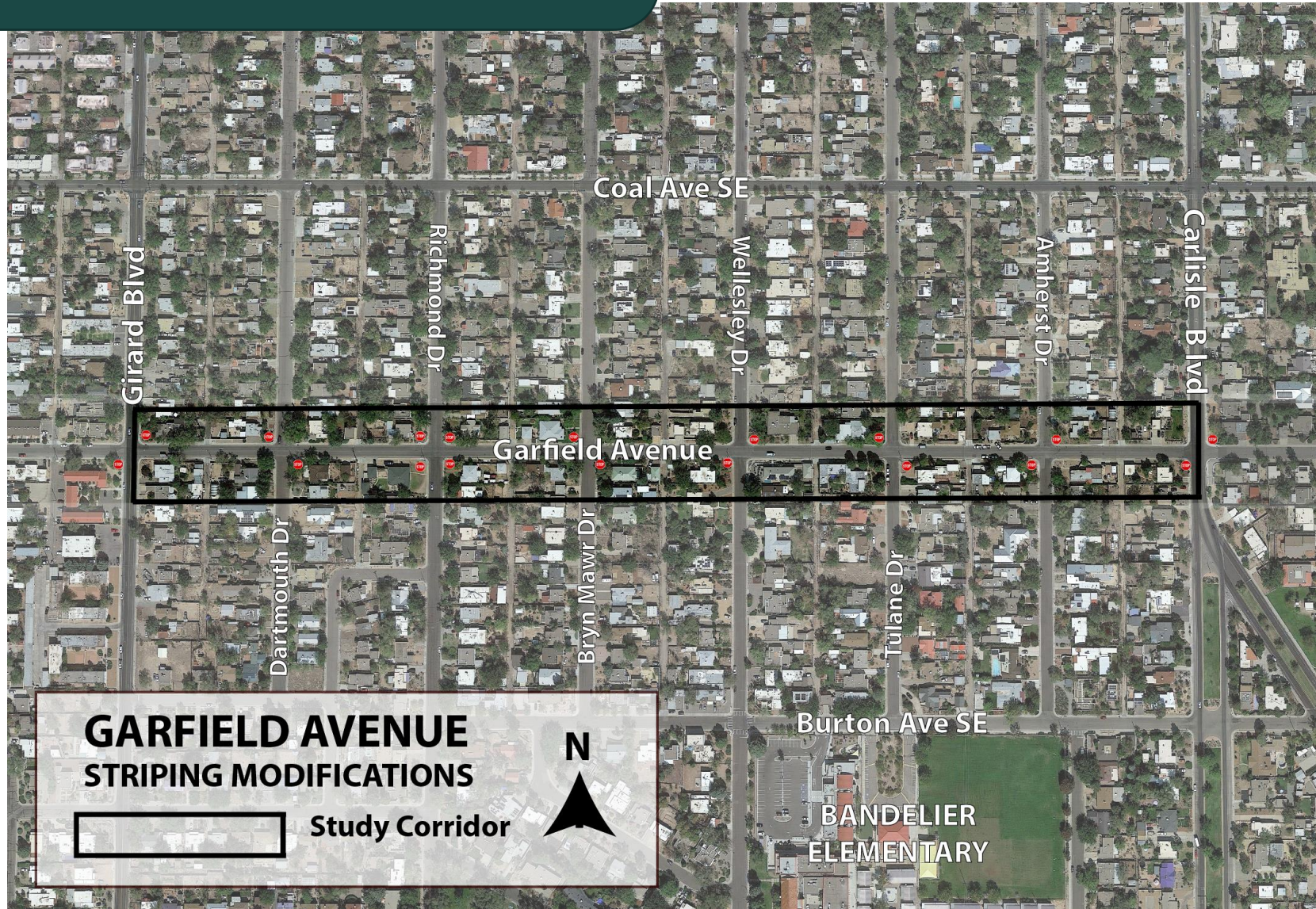
# Introductions



ONE  
ALBUQUE  
ROQUE

Bohannon  Huston

# Study Corridor



# Study Background

- Previous Studies
  - Victory Hills Neighborhood Association Traffic Concerns
  - City of ABQ Garfield Avenue Study (*Wilson and Co.*)
- Purpose of Current Study
  - Support the existing bicycle and pedestrian traffic
  - Further consideration of traffic calming recommendations
    - Striping for bicycles/pedestrians
    - Traffic circles



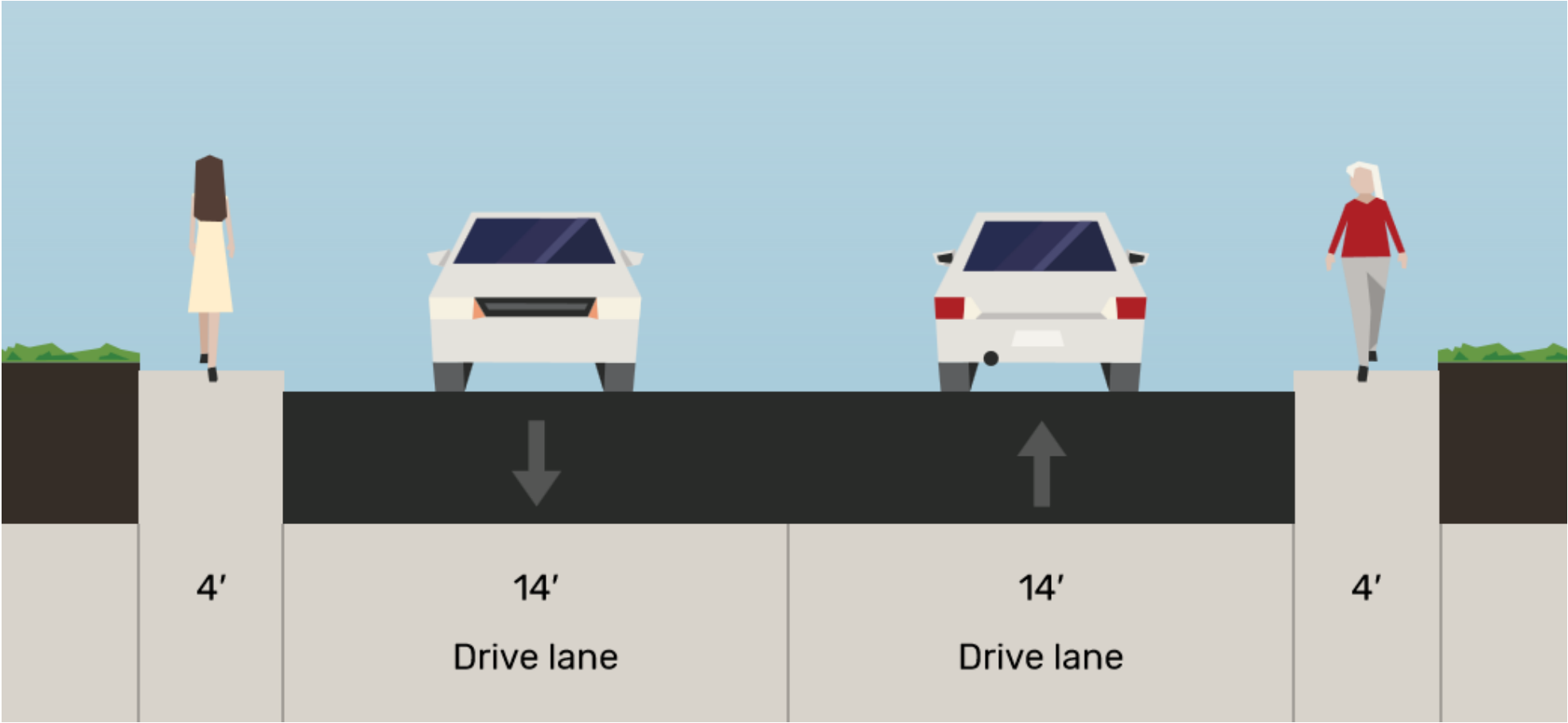
Existing Conditions

# Existing Conditions

- Neighborhood street
- 25 mph posted speed limit
- No striping, new asphalt in 2022
- 3.5 to 4 ft wide sidewalks
- Obstructions in sidewalk
- Steep sidewalk transitions at driveways
- Traffic: 700-870 vehicles per day
- High bicycle and pedestrian use



# Existing Conditions



# Bicyclist and Pedestrian Counts

Day	West End	East End
Friday (12 hrs)	94	100
Saturday (12 hrs)	94	99

\*33% bicyclists, 67% pedestrians

Source: City of ABQ Garfield Ave Study



# 85<sup>th</sup> Percentile Speed

Speed	West End	East End
Eastbound	26.9 mph	30.2 mph
Westbound	26.3 mph	25.9 mph

# Crashes



- 9 crashes from 2016-2019
- 1 out of 9 crashes resulted in an injury
- 4 out of 9 crashes involved drivers running a STOP sign

# Bicyclists and Pedestrians



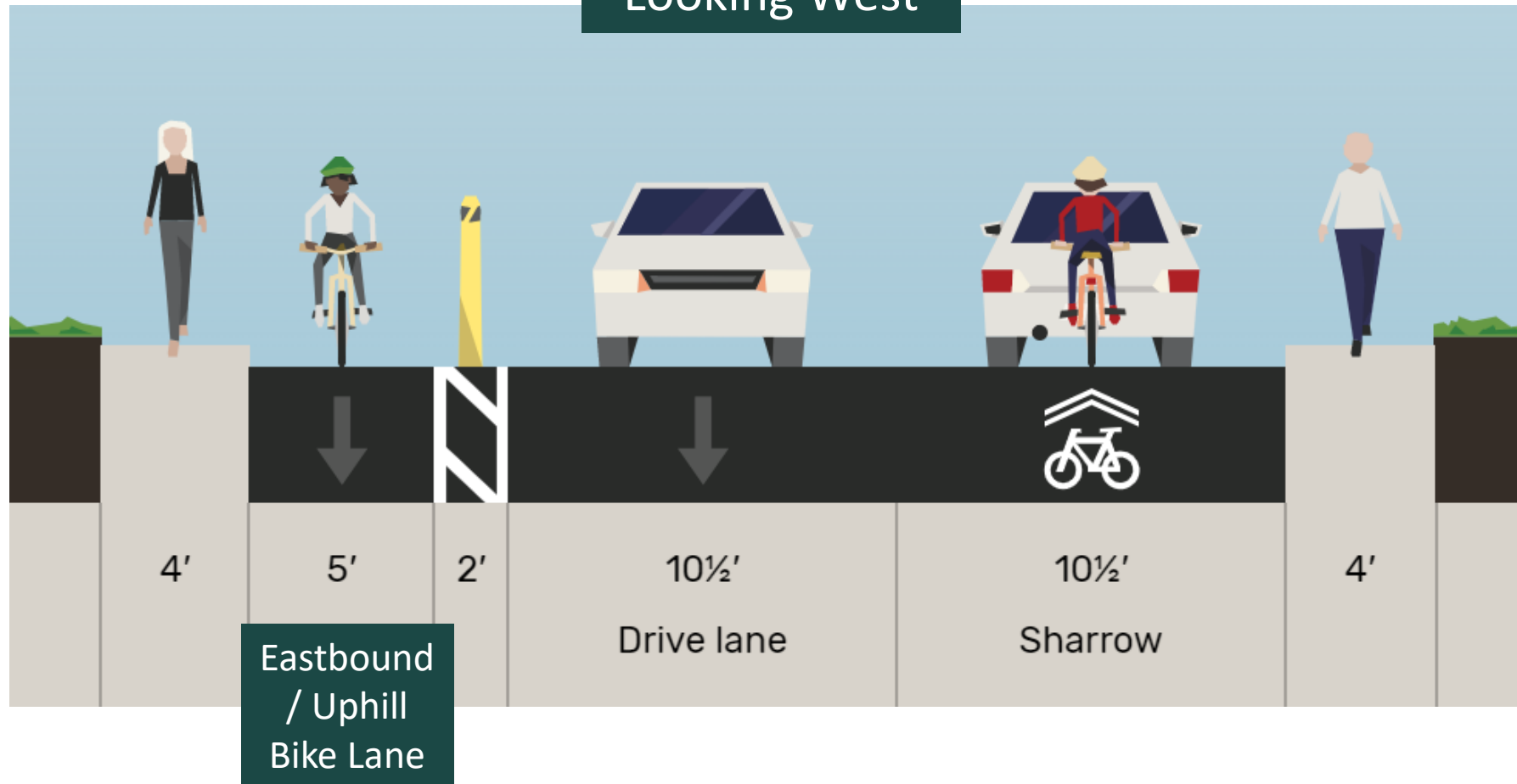


Alternatives

# Bike Lane Alternative



Looking West



# Bike Lane Alternative



# Bike Lane Alternative



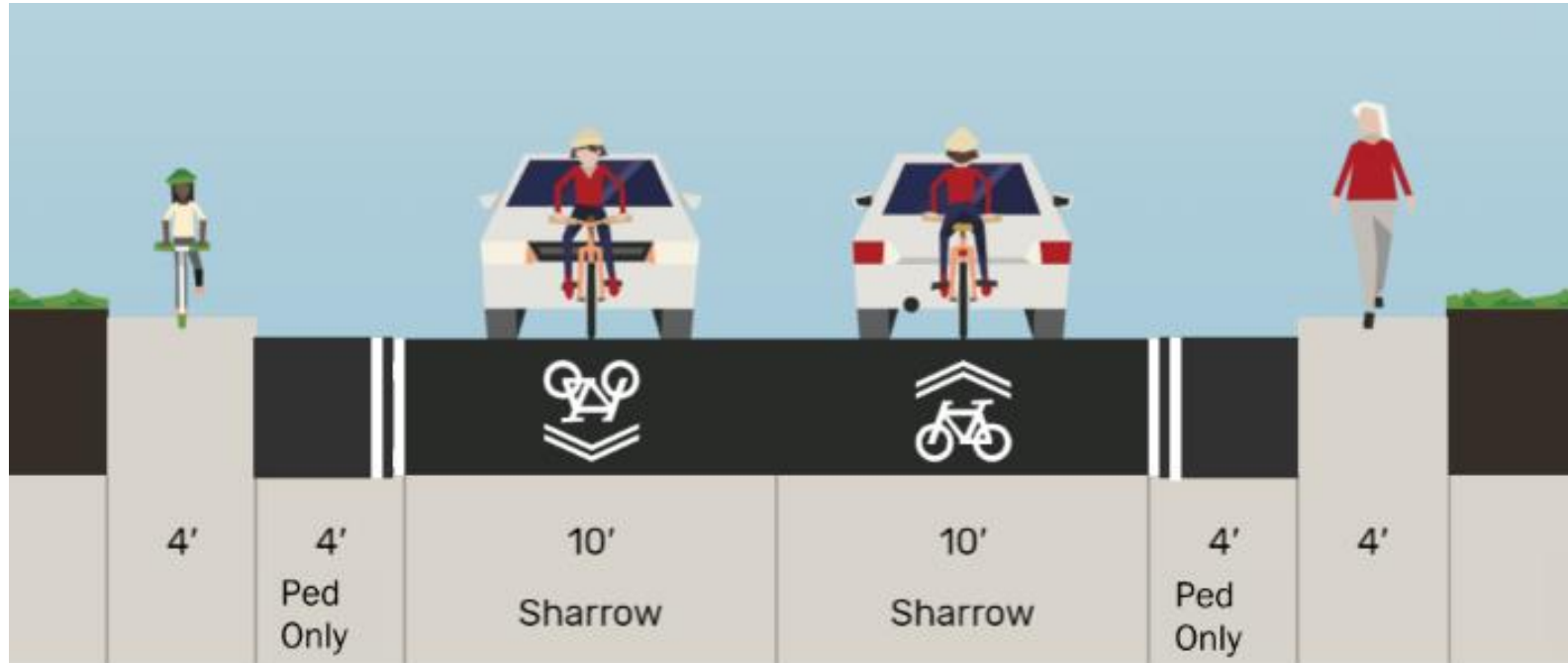
## Pros:

- Designated space for uphill bicyclists
- Alerts drivers to bike traffic
- Narrows driving lanes to slow traffic speeds

## Cons:

- Removes parking
- Does not provide increased pedestrian space

# Pedestrian Lane Alternative



Sidewalk Buffer at Copper Ave



# Pedestrian Lane Alternative



# Pedestrian Lane Alternative

## Pros:

- Increases available pedestrian space
- Creates more accessible walkway
- Narrows driving lanes to slow traffic speeds
- Formalizes current patterns of use

## Cons:

- Removes on-street parking
- Does not provide separated space for bicycles

# Traffic Circles

- Prevent drivers from speeding through intersections
- Allow users time to react and communicate
- Speed reductions:
  - 4-13 mph within intersection
  - 1-6 mph before/after intersection

Traffic Circle at Silver Ave/Princeton Dr



Source: Google Earth

# Discussion



- Comments must be submitted by Thursday, March 16
- Ways to provide input:
  - Verbal meeting comments will be documented
  - Written comment forms
  - Email [outreach@bhinc.com](mailto:outreach@bhinc.com)
  - Call 505-264-0111