



Planning and the Pandemic

The ski club is proceeding with plans for the annual picnic, general meetings, instruction, hut trip, and bus trip as it has always done, due to the lengthy lead time needed to plan and execute these events. The execution of the plans will ultimately be determined, at a minimum, to the orders and guidelines set forth by the presiding authorities and medical experts from the jurisdictions (federal, state, county and city) covering the location of the planned activity. There are still unknowns about the COVID 19 virus being researched by medical science, therefore orders and guidelines will likely change and evolve. Consequently club events will be postponed or canceled, when the Board, with input from members determines the pandemic poses an unacceptable risk at the time of the event.

Visiting with club members by phone & email, members are typically following personal guidelines more conservative than set forth by governing authorities. The extra vigilance is appreciated, and we wish to thank you in advance for your patient support to our club volunteers as they strive toward bringing opportunities for the enjoyment of skiing snowy trails with the camaraderie and laughter of your friends, in this unprecedented setting.

Annual Picnic

The annual picnic has been rescheduled from mid-June to mid-September, as the picnic ground is closed. Most probable picnic location is the Oak Flats Picnic Ground in the Manzano Mountains, at the Yucca and Locust picnic sites. The picnic grounds are approximately 9 miles south of I40 on State Road 337. Additional specifics on what to bring and the location will be distributed a few days prior to the picnic.

T-shirts and Baseball Caps

There are still a few T-shirts and baseball caps in inventory. Sales will resume when it is safe to conduct club events.

Bus Trips

The bus trip survey committee (Teri, Guy, Ruth, Bob) has found Crested Butte, and Leadville as the most favored destinations, Frisco, Steamboat Springs, and Pagosa Springs received several votes as well. The respondents cited positive feedback for bus trips as the variety of skiing, snow conditions, camaraderie, and having a driver. Scheduling conflicts and, costs, were leading factors for folks opting out of a bus trip. Folks are hesitant to ride a bus for destinations that are too distant (north of I70), or trips that they can easily drive to (places near the Colorado – New Mexico state line). Other commentary to the survey is related to the tradeoffs of a bus trip, such as the transit time from Albuquerque to the Colorado motel, trailhead access, and local ground transportation.

The bus trip chairmen will communicate the selected destination and time line, when the necessary long lead time arrangements are settled.

Hut Trip 2021

Although we were way down the list on the lottery this time around, our efforts yielded Sangree M. Froelicher Hut, formerly known as Belvedere Hut. Froelicher, one of the newer offerings in the 10th Mountain system, is bright, airy, and spacious. At 11,630, this is the highest hut in the system. It will have been five years since our last visit to this site.

From Litz's book, Colorado Hut-to-Hut: "[Froelicher] has all of the ingredients for a fine hut outing for skiers of all persuasions. It has a splendid, relatively short approach tour. It offers an expansive panorama of the Collegiate Peaks from its front deck and windows. It is surrounded by varied terrain with nearby telemark slopes, and there are short tours that quickly take you up onto safe ridges above tree line with even better views."



Trip dates, including an extra day, if necessary, to get home after skiing out, are: January 30 – February 5, 2021. We are initially limiting participation to 14 skiers. The cost per person for the hut is \$170.00.

Signup has already commenced; contact Guy Miller for further details.

Check out the hut: http://www.huts.org/The_Huts/sangrees.php,

From the Archives

Original crediting goes to the Western American Ski Sport Museum

THE GOOD OL' DAYS?

Skiing in nineteenth-century North America

■ Skis, which were called "Norwegian snowshoes," were made from a single board of hickory, ash, or pine that measured 12 feet long, 4 inches wide, and 1¼ inches thick in the middle. They used a single six- to eight-foot pole.

■ Ski wax was made from a cooked mixture of castor oil, tar, spermaceti, and pitch and was called "dope." Recipes were secret, and dope mixers became as famous as the skiers.

■ The "Early-American Ski Technique" was simple: Stand up and pray your Norwegian snowshoes go straight.

■ The first ski races in North America were introduced by Norwegian immigrants to miners in Sierra Nevada gold camps. If you were lucky, you won a bucket of lager beer, 100 silver dollars, or even a claim to a gold mine.

■ Until the first ski lift was built in Woodstock, Vermont in 1934, people just skied; they didn't differentiate between alpine and nordic.

■ Norwegian Sondre Nordheim (1825-1897), the "father of modern skiing," revolutionized nineteenth-century skiing with a "modern" birch-rope heel-strap binding that wrapped around the back of the boot and secured the heel to the ski. It supplemented the traditional toe-strap binding. Nordheim's bindings allowed greater lateral control and led to the development of the telemark turn, named after the Norwegian province of Telemark.

—Sarah Moessinger

New Board Members

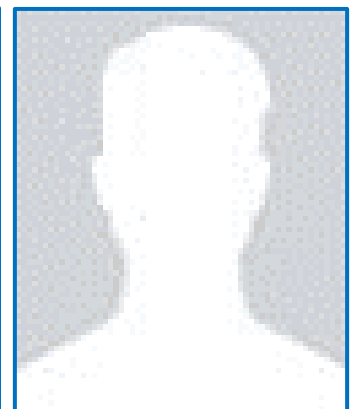
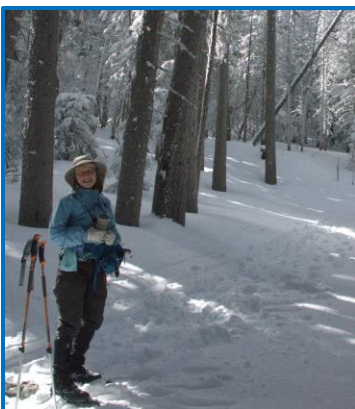
Meet the folks that stepped in to fill the roles of board members stepping aside.

Terri Elisberg - Refreshments
Always Smiling

Phyllis Pryor - Refreshments
Always Upbeat

Amy Mathis - Newsletter
Picture coming next year

Jim Whitfield - Instruction
Picture coming next year



Retired Board Members

Though they have not suffered the indignity of a bad hair day, what happened to the retiring board members?

Newsletter: Last seen, working at a bird sanctuary, feeding vultures. Should have listened closely to the outgoing refreshments expert, with respect to appropriate vulture cuisine and self-preservation.

Instruction: Last seen, giving a lesson on how to use your skis, to compensate for missing planks on a bridge. She would do anything to help the students.

Refreshments: Last seen, skiing way to fast and missing the right hand curve, whilst bringing first aid and cheese cake to a foolish editor. Please slow down for curves.



Trip Report Yellowstone National Park

Several members traveled to Yellowstone via air travel to Montana, and shuttle service to Yellowstone. Happy faces, Geysers (to reheat your hot chocolate), recovery of the park from the fires of 1988, and beautiful trails.



Photos on the previous page:

Burn scar recovery: The Howard Eaton Trail.

Lone Street Geyser: Steve Gendron, Amy Ballard, Chris Rasmussen, Peter Marks

Mammoth Area: Bronwyn Willis, Celeste Taylor Ryman, Steve Gendron

Happy Skiers: Amy Ballard, Steve Gendron, Bet Gendron, Guide, Celeste Taylor-Ryman, Michelle Worm

Photos this page:

Single File: Canyon ski tour

Snack time: Peter Marks



Pagosa Springs

Louise Broadbent, and David D Antonio crushing the snowflakes near Lobo overlook.



Calendar of Events 2019-2020

Weekend	Mid-September afternoon	Annual Picnic. Tentatively scheduled at Oak Flats Picnic Ground
---------	-------------------------	---

Calendar of Events 2020-2021

Friday - Monday	January or February 2021	Bus Trip
Monday - Saturday	January 30 - February 5 2021	Hut Trip to Sangree M. Froelicher Hut

Be Well Be Safe

Wishing everyone a safe enjoyable summer: biking, hiking the sea shore, hillside views, sipping expensive coffee.



Board Members 2019-2020			
President	Bill Heitz	259-8745	President@nmccskiclub.org
Vice President	Peter Marks	856-8237	VicePresident@nmccskiclub.org
Secretary	Nancy Jenkins	269-0855	Secretary@nmccskiclub.org
Treasurer	Max Shepherd	270-5258	Treasurer@nmccskiclub.org
Day Trips	Guy Miller	306-2628	DayTrips@nmccskiclub.org
Long Bus Trips	Bob Potter David D'Antonio	232-2486 553-2795	BusTrips@nmccskiclub.org
Hut Trips	Guy Miller	306-2628	HutTrips@nmccskiclub.org
Car Trips	Scott Mitchell	977-8893	CarTrips@nmccskiclub.org
Newsletter	<i>Dean Athrow</i>	275-1097	Newsletter@nmccskiclub.org
Instruction	<i>Ruth Bargman-Romero</i>	980-2703	Instruction@nmccskiclub.org
Membership	Catherine Waters	218-6936	Membership@nmccskiclub.org
Meetup & Social Media	Bet Gendron	228-8025	SocialMedia@nmccskiclub.org
Programs	Bob Guarnieri	331-8381	Programs@nmccskiclub.org
Mailing/Egroup	Marilynn Szydlowski	332-8018	egroup@nmccskiclub.org
Refreshments	<i>Teri Sheldahl</i>	980-3241	Refreshments@nmccskiclub.org
Trails	Sam Beard	828-0673	Trails@nmccskiclub.org
Web Site	Eric Russell	281-1289	Website@nmccskiclub.org

Finding Us
http://nmccskiclub.org
https://www.facebook.com/groups/1663936723893594
New Mexico Cross Country Ski Club PO Box 51563 Albuquerque, NM 87181