

New Mexico Cross Country Ski Club

NEWS

January 2021

December Club Meeting Summary

Are you new to XC skiing? Did you miss our instruction by our very own Jim Whitfield? On December 9, Jim gave a first-rate presentation on different types of XC gear, what types of clothing to wear, and what to expect the first time you are on-the-snow with XC skis. Please check out our MeetUp page for on-the-snow instruction. Before you do that though, you will have to do a snow dance as we are lacking a bit in that category this season. Thanks goes out to Jim and our other instructors!

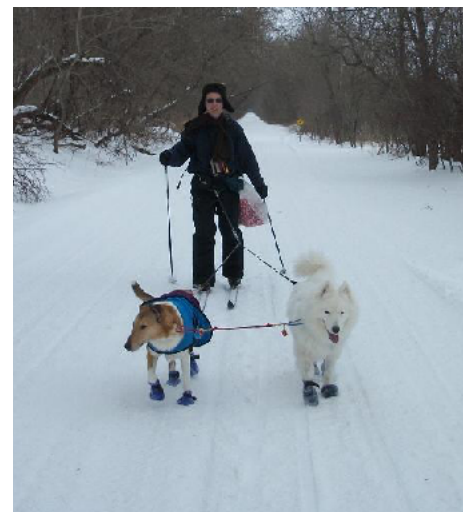
<https://www.meetup.com/New-Mexico-Cross-Country-Ski-Meetup-Group/>

December is typically the time for our annual Holiday Extravaganza. In the past, club members have gotten together to enjoy eats and treats, crafts, and socializing. This year however, was a tad different. We had our meeting over Zoom and enjoyed a captivating slide show from the past. I think it is safe to say that we were all mesmerized by the beauty of the snow and felt the enjoyment of love for skiing in those pictures. I know I just wanted to hang on to that and not let go. Fear not folks, we WILL be doing all of that again, and more. There is hope and if we just hang on a little longer we will all be out there enjoying it all over again. We also had various club members show a photo and talk about their ski experiences.

Our next general club meeting will be January 14 via Zoom where we will have a presentation about Skijoring. Huh? What is THAT? Well, skijoring is the delightful sport of skiing with your favorite animal. Okay, maybe not your cat, but your dog or horse! Learn all about it at our next club meeting.

Gary Fenchel has been playing in the snow with his dogs for two decades. His favorite snow-

bound activity is skijoring, which is cross-country skiing with canine assistance. Gary will giving a Zoom presentation on skijoring this month aimed at helping you teach your collie, Samoyed, boarder collie, husky, golden retriever, lab, or undefinable mutt to play in the snow with you. If you have skis and a dog who loves to run you already have most of what you need. (More information on dog pulling sports is available at www.nmmusher.org).



Board Meeting Summary

NMCCSC Board members met virtually over Zoom on December 17. We discussed ways in which we can promote club visibility by putting up flyers and business cards in town. We came to a decision to use our MeetUp page for beginner instruction as this is a reliable way to keep track of participants and keep our 5-person mandate in check. Are you a fantabulous XC skier? Want to share it with others? We are looking for intermediate ski instructors for the season. If interested please contact Jim Whitfield. For those of us who would like to do an informal meetup for skiing, where everyone takes their own vehicles and meets at a common location for an outing, the leader must print out the club liability form from our website and all participating members must sign it.

NMCCSC Membership and the PURGE



FINAL REMINDER to Renew your NMCCSC Membership for the 2020-21 Season

So far this season we have 209 members including 38 new members. While you can join the club at any time, we are

nearing the Cliff of the Insanity... I mean the Purge. Oh NO! Are you an old member who STILL hasn't renewed? Don't you want to receive our amazing newsletter and be privy to all of the club outings? **If you haven't**

renewed by January 10, you will be purged from our eGroup email list and no longer get our newsletter. We want you to remain with us, so please renew at <https://www.nmccscmembership.org/>.

An Update about Sangria M. Froelicher Hut Trip

Covid strikes again. We have decided to cancel this year's hut trip to Sangria M. Froelicher. As frustrating as this is, we must remember that virus vigilance at this time is imperative. Our hospitals are overwhelmed and we wish to follow our governor's mandates and be responsible with our club outings. If you signed up and paid, you will be fully reimbursed. A vaccine is on its way and there is hope. We will resume these amazing trips next season. Be safe everyone! Should you have any questions, please contact Guy Miller at DayTrips@nmccskiclub.org.

GREAT GEAR FOR DONATION TO ROADRUNNER FOOD BANK !!!

by Guy Miller

How would you like to get some nearly new gear for a song, AND feel really good about it? Check this out:

1. Rossignol BC 70's, 170 cm, full metal edges with Karhu 3 pin bindings, complete with a pair of Ascension kicker skins, and Swix fixed length 130 cm poles. Aside from a couple of tiny scratches, the skis are in almost new condition, as are the skins, which look like they've never been used. Yours for a \$30 donation to Roadrunner Food Bank.
2. Asolo Snowdrift women's 3 pin boots, size 6.5. These are outstanding, sturdy backcountry boots in good condition. \$30 to Roadrunner, and you'll be ready to tear up the back country !

Skis and boots together, \$50 !

3. Lifelink adjustable poles. These can be joined together to make an avalanche probe. \$15. The life you save might be mine!
4. Lifelink collapsible shovel. Tired of being the only one without a shovel? \$15 to Roadrunner will fix that problem!

Probe and shovel together, \$25!

I bet you really want ALL of this premium gear, yes? A \$65 tax deductible donation is all that's standing in the way. Talk to Guy to make this happen. Contact him at HutTrips@nmccskiclub.org.



Club Member Outings

We may not be seeing much in the way of flurries outside, but our club email is another story. If you have been keeping abreast on the goings-on of club members there has been a flurry

of activity as folks share their skiing adventures with everyone via eGroups. Many of our members have given reports of snow conditions in the Sandias, Jemez, and Sante Fe areas. It is

our hope that members who share snow reports, trail directions, and routes will open up a new world for those who may not have ever skied in those places.



Coyote Call Trail - Jemez (photo by Amy Mathis)



Sandia Mountain (photo by Tony Hsu)



Sam's/Kerry's Trail - Sandias (photo by Sam Beard)



SALES AND SWAG

"Ski Touring in Northern New Mexico"

Book by Sam Beard

Contact Sam Beard via NMCCSCeGroup for more

NMCCSC Club SWAG!!

T-shirts - \$20

Baseball cap - \$15

T-shirt and cap combo - \$30

Want to see larger pictures? Check out

<https://nmccskiclub.org/club-swag/>

Contact the club to purchase



Recommended Ski Trails in the Sandia and Jemez Mountains

By Sam Beard

The recommended trails usually have good snow conditions and are enjoyable for skiers with skills appropriate for the trail.

Trails listed below *not* recommended for the following reasons: frequently poor snow conditions due to too much sun exposure, trail area was thinned and bermed by the U. S. Forest Service, trail not maintained for various reasons, trail characteristics not consistent with those of enjoyable ski routes, or area was burned in a wildfire, route was eroded, and hundreds of dead trees fell across the trail.



Photo by Tony Hsu

Trail descriptions and directions to trailheads are presented in the second edition of my trail guide, *Ski Touring in Northern New Mexico*, published in 1988. I am selling the book from my home for \$9.00. If you wish to purchase a copy, please email me at samgbeard@msn.com.

A. Sandia Mountains

1. Recommend all trails, **except**: 10K North, Tree Spring, and South Crest Trail from Sandia Crest to upper Tram terminal.
2. Recommend new routes groomed by the Sandia Nordic Ski Club between 10K South Trailhead and Ellis Trailhead.

B. Jemez Mountains

1. Along NM-126 west of La Cueva – Recommend San Antonio Creek Road, Valle San Antonio Road, Lake Fork Canyon Road, and Fenton Hill Road
2. Along NM-4 east of La Cueva
 - a. Redondo Campground Area – Recommend all trails.
 - b. East Fork Area – Recommend all trails, **except**

Mistletoe Canyon Trail. Especially recommend East Fork East Loop Trail – From the Los Griegos parking lot, walk a couple of hundred feet to the east to the gate in the fence on the north side of the highway. Follow this road (Burn Trail) about one-quarter mile and turn right on a road at a very large pine tree. Follow this connecting trail to the east and north to the saddle at the west end of the East Loop. (The trail to the west is the East Fork Ridge Trail.) Ski either clockwise or counter-clockwise around the loop. The snow on the north side of the loop is especially good.

c. Los Griegos Area – Recommend Ladera and Elk Ridge Trails.

d. Peralta Area – Recommend Corral Canyon and Calzada Trails.

3. Valles Caldera National Preserve – The VCNP was a private ranch when the second of my book was published in 1988. The VCNP opened to the public in 2002. Ski trail maps are found on the VCNP Web site.

a. Recommend the Missing Trail and Coyote Call Trails with trailheads on NM-4.

b. The Main Gate to the VCNP is located on the north side of NM-4 near the west end of Valle Grande. Follow the dirt road 2 miles to the Visitors Center. From here one may ski in any direction. The most popular routes are around La Jara Mountain at the Visitors Center, to the west to the cabin area, NW to the History Grove, and SW to South Mountain.

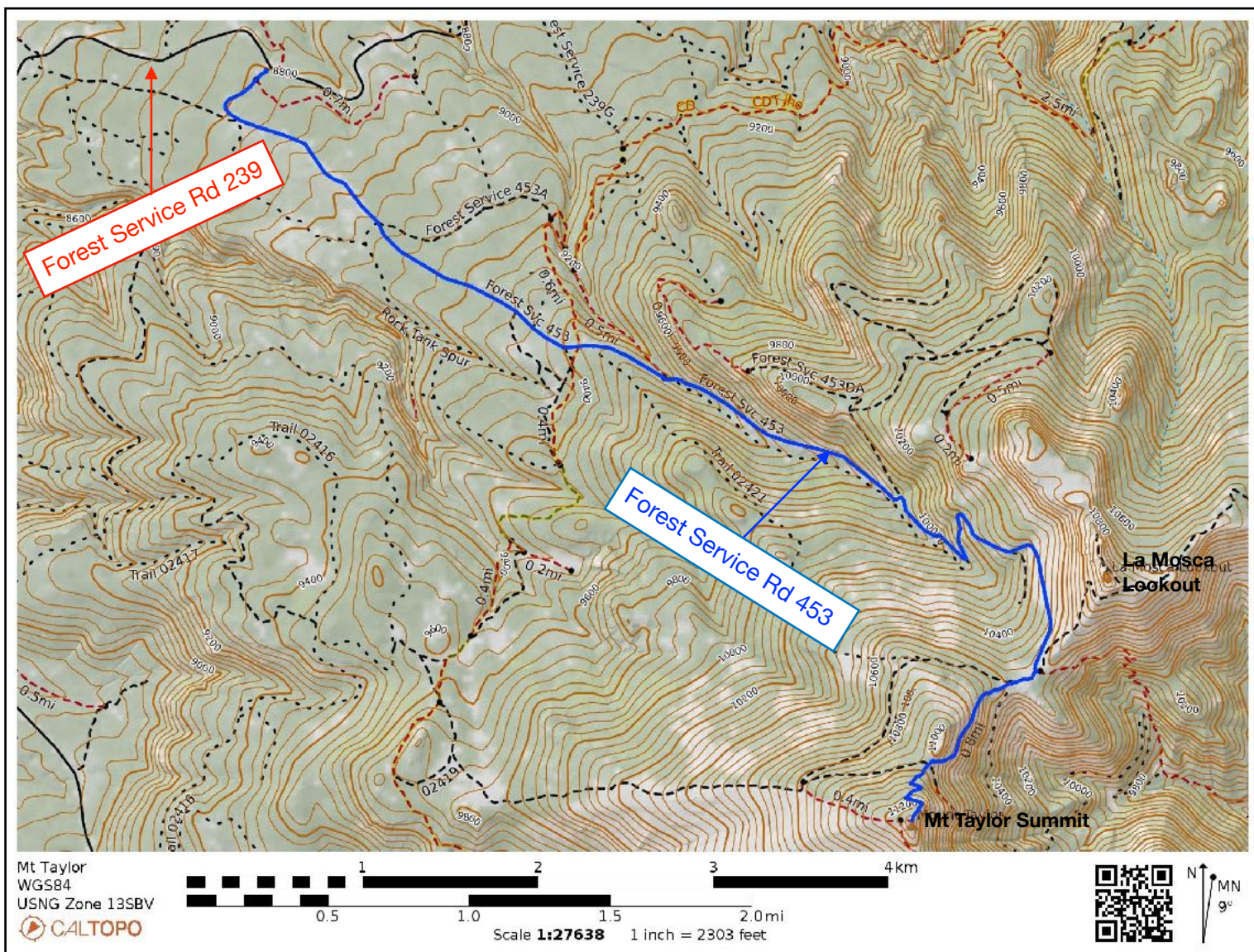
WHERE TO GO IN THE SNOW

By Guy Miller

Class II-III

One of my all time favorite places for an all day ski adventure is Mt. Taylor. Because of the increased popularity of the annual Quadrathlon, I haven't been there in quite some time, because of the large numbers of skiers and snowshoers who go there to practice, thereby trashing the trails pretty thoroughly. This year, however, the quad has been cancelled, so I'm hoping the area will be much more skiable.

Directions to the trailhead are found in Sam Beard's book, Ski Touring in Northern New Mexico. Take I-40 to the first exit for Grants. Head northeast on NM 547 (Lobo Canyon Road). At the end of the pavement, continue on FR 239 until the junction with FR 453, which will take you to the trailhead. The roads are plowed, although I don't know how quickly crews will get out there after a snowfall. If you're able to drive all the way to the trailhead, it's a 6 mile ski up to the summit.

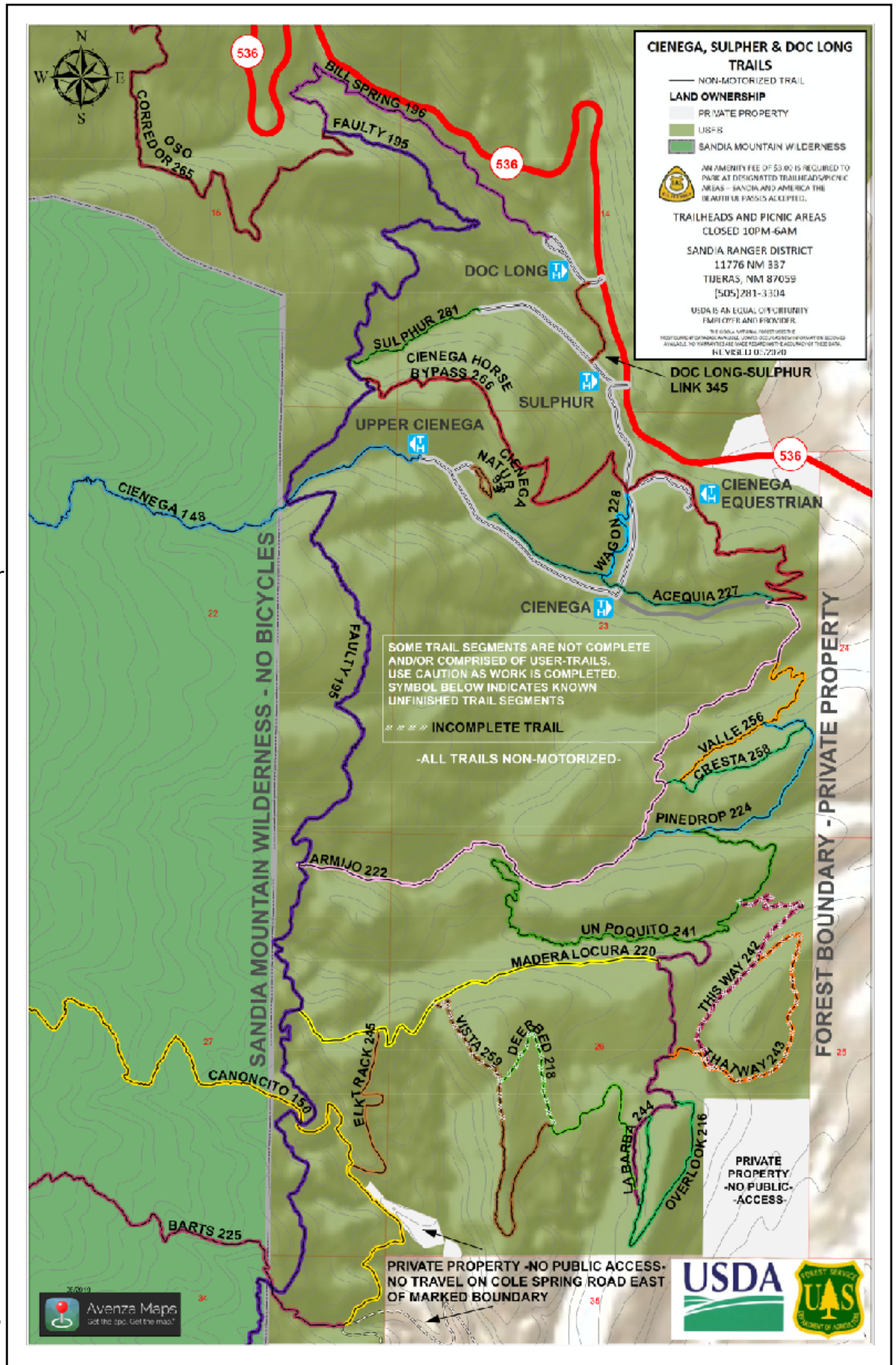


Class I

Ideal terrain for beginners consists of a lot of flat or gently rolling areas, interspersed with small ups and downs. These kinds of areas are usually found at lower elevations. Unfortunately, this often means less-than-ideal snow conditions, especially in a low snow year. Good snow won't last as long at lower elevations, so it's important to hit it as soon after a snowfall as possible. The upside to that is, often roads are passable to the lower elevations, while those wanting to get up higher have to wait for the snowplows !

One of my favorite places for beginner level skiing is the area around Doc Long picnic ground in the Sandias. Doc Long, Cienega Canyon and Sulphur Canyon are all connected by a network of trails. Weekdays are best if you want to avoid crowds. Failing that, try to get there early if you're going on a weekend.

Getting there is easy. Take Hwy 14 north past Cedar Crest and turn on Hwy 536 toward the ski area. Doc Long is just a couple of miles up the road. There is ample parking there. Take advantage of this opportunity to hone your skills the next time it snows. Maybe I'll see you there !



Important Websites



Snow Report Sites	
OnTheSnow.com	Has the latest snow report for ski resorts in NM and CO.
www.wcc.nrcs.usda.gov/snow	Includes Snow Telemetry and Snow course data for snowpack information. Click on the blue dots at the site for updated info about current snow conditions.
https://sandiapeak.com/snow-report/	Our own Sandia Peak snow information
https://www.sandianordic.org	Sandia Nordic's latest grooming report news for the Crest.

Avalanche Outlook	
US	https://avalanche.org/
Canada	https://www.avalanche.ca/map
Taos	http://taosavalanchecenter.org
Crested Butte	http://cbavalanchecenter.org/
Northern NM	http://www.nnmae.org/
Some of the sites from https://avalanche.org	
Colorado	http://avalanche.state.co.us/
Utah	https://utahavalanchecenter.org
Tetons	http://jhavalanche.org
Yellowstone	https://www.mtavalanche.com
Sawtooths	https://www.sawtoothavalanche.com
Central Sierra	https://www.sierraavalanchecenter.org
Eastern Sierra	http://www.esavalanche.org



CALENDAR	
January	
Jan 14	Club Meeting via Zoom 7-9pm Skijooring (skiing with dogs/horses)
Jan 28	Board Meeting via Zoom
February	
Feb 11	Club Meeting via Zoom 7-9pm Ski Technology Apps
Feb 25	Board Meeting via Zoom
March	
Mar 11	Club Meeting via Zoom 7-9pm End of season wrap-up
Mar 25	Board Meeting via Zoom



Board Members 2020-2021			
President	Bill Heitz	259-8745	President@nmccskiclub.org
Vice President	Peter Marks	856-8237	VicePresident@nmccskiclub.org
Secretary	Nancy Jenkins	269-0855	secretary@nmccskiclub.org
Treasurer	Max Shepherd	270-5258	Treasurer@nmccskiclub.org
Day Trips	Guy Miller	306-2628	DayTrips@nmccskiclub.org
Long Bus Trips	Bob Potter & David D'Antonio	232-2486 553-2795	BusTrips@nmccskiclub.org
Hut Trips	Guy Miller	306-2628	HutTrips@nmccskiclub.org
Car Trips	Scott Mitchell	977-8893	CarTrips@nmccskiclub.org
Newsletter	Amy Mathis	808-344-8543	Newsletter@nmccskiclub.org
Instruction	Jim Whitfield		instruction@nmccskiclub.org
Membership	Catherine Waters	218-6936	membership@nmccskiclub.org
Meetup & Social Media	Bet Gendron	228-8025	SocialMedia@nmccskiclub.org
Programs	Bob Guarnieri	331-8381	programs@nmccskiclub.org
Mailing/Egroup	Marilynn Szydowski	332-8018	egroup@nmccskiclub.org
Refreshments	Phyllis Pryor & Terri Elisberg		refreshments@nmccskiclub.org
Trails	Sam Beard	828-0673	trails@nmccskiclub.org
Web Site	Chris Cochrum		website@nmccskiclub.org
Finding Us			
Web Page	http://nmccskiclub.org		
FaceBook	https://www.facebook.com/groups/1663936723893594		
Mail	New Mexico Cross Country Ski Club PO Box 50534 Albuquerque, NM 87181		

New Mexico Cross Country Ski Club
PO Box 50534
Albuquerque, NM 87181