

USEFUL INFORMATION

Parking: Amenity fee of \$3 is required for all vehicles parked at Sandia Crest. Pass is good for all other areas on the mountain for the day.

Food & Water: Available at Sandia Crest House Gift Shop.

Restrooms: Available at Crest and Tram

Weather: Temperatures on the Crest can be 20-30 degrees lower than in Albuquerque. Weather conditions may vary.

Emergency/Medical Assistance: call 911

SUGGESTED HIKES

FROM SANDIA CREST:

CREST HOUSE NATURE TRAIL VIA TRAIL #130 – 0.5 MILE

KIWANIS CABIN VIA TRAIL #130 & #94– 0.8 MILE

UPPER TRAM TERMINAL VIA TRAIL #130 – 1.8 MILES

UPPER TRAM TERMINAL VIA TRAILS #84 & #137 – 2.0 MILES

FROM UPPER TRAM TERMINAL:

4 SEASONS NATURE TRAIL VIA TRAIL #130 – 0.5 MILE

KIWANIS CABIN VIA TRAILS #130 & #93 – 1 MILE

SANDIA CREST HOUSE VIA TRAIL #130 – 1.8 MILES

LOOP HIKE – CREST SPUR #84, LA LUZ #137 & CREST #130 – 3.8 MILES

HAVE A SAFE VISIT & HELP TAKE CARE OF THE CREST!

- LEAVE ONLY FOOTPRINTS, TAKE ONLY PICTURES
- ALLOW PLENTY OF TIME FOR YOUR HIKE
- PACK WATER, SNACKS AND EXTRA CLOTHING FOR CHANGING WEATHER CONDITIONS

WARNING

UPPER LA LUZ #137 & CREST SPUR #84 TRAVEL ALONG STEEP & EXPOSED AREAS.
TRACTION DEVICES ARE HIGHLY RECOMMENDED IN WINTER.

Welcome
to the **SANDIA CREST**



Sandia Crest is located at the top of the Sandia National Scenic Byway on the Sandia Ranger District, Cibola National Forest & Grasslands.
11776 NM 337, TIJERAS, NM, (505)281-3304



Available Services:

Sandia Crest House Gift Shop

(call for hours)

(505)243-0605, sandiacresthouse.com

Sandia Peak Aerial Tramway

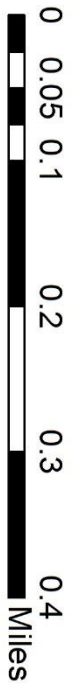
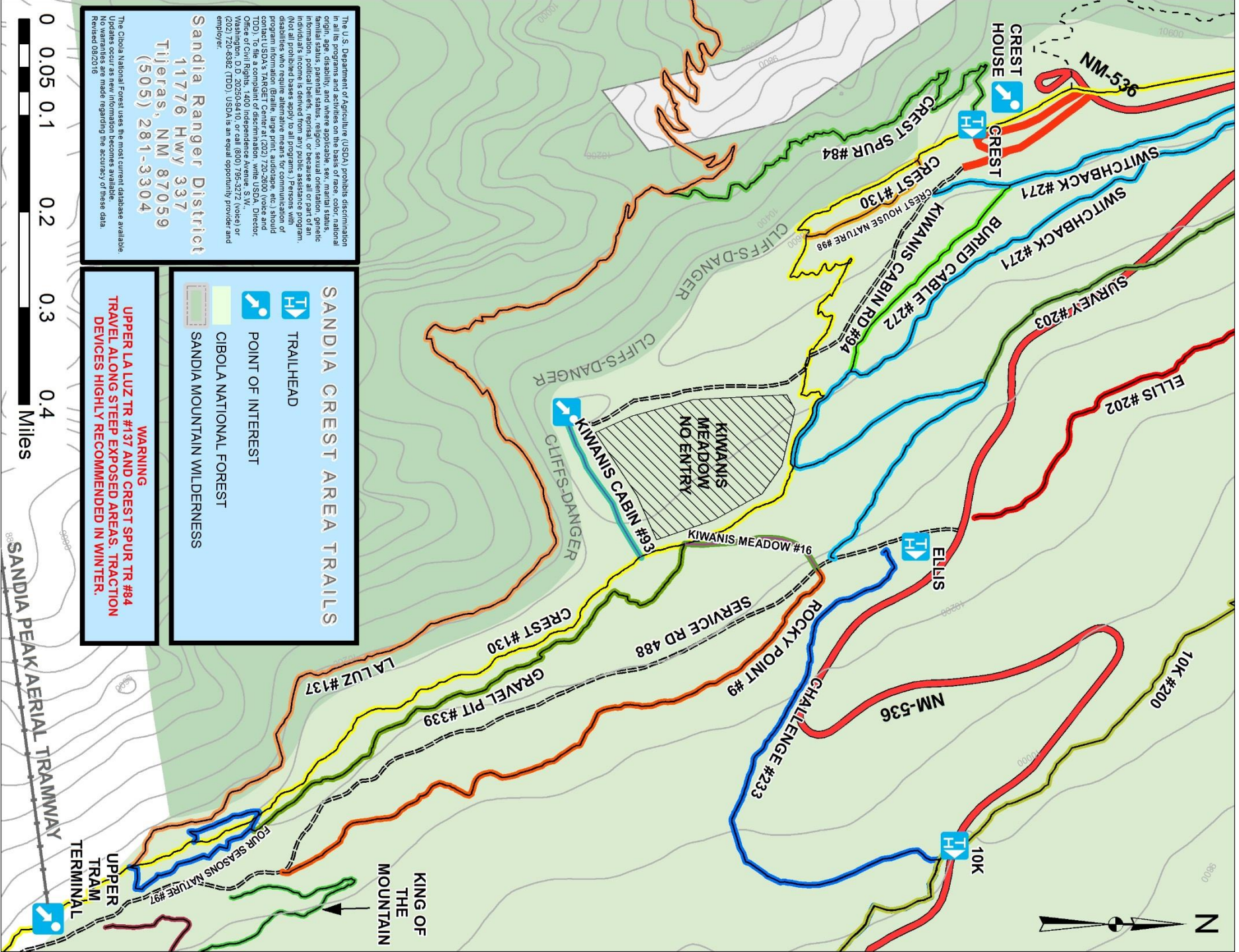
(Labor to Memorial Day (Daily 9am-8pm (Tuesdays 5pm-8pm)))

(Memorial Day to Labor Day (Daily 9am-9pm))

(Balloon Fiesta (Daily 9am-9pm))

CLOSED FOR MAINTENANCE MID-NOVEMBER & MID-APRIL

(505)856-7325, sandiapeak.com



The U.S. Department of Agriculture (USDA) prohibits discrimination in all its programs and activities on the basis of race, color, national origin, age, disability, and where applicable, sex, marital status, familial status, parental status, religion, sexual orientation, genetic information, political beliefs, reprisal, or because all or part of an individual's ancestry is from a particular geographic area of the United States. (Not all prohibited bases apply to all programs.) Persons with disabilities who require alternative means for communication of program information (Braille, large print, audiotape, etc.) should contact USDA's TARGET Center at (202) 720-2600 (voice and TDD). To file a complaint of discrimination, write USDA, Director, Office of Civil Rights, Room 202, 1492 L Street, NW, Washington, D.C. 20250-9410, or call (800) 795-3272 (voice) or (202) 720-6382 (TDD). USDA is an equal opportunity provider and employer.

Sandia Ranger District
 11776 Hwy 337
 Tijeras, NM 87059
 (505) 281-3304

The Cibola National Forest uses the most current database available. Updates occur as new information becomes available. No warranties are made regarding the accuracy of these data. Revised 08/2016

SANDIA CREST AREA TRAILS

- TRAILHEAD
- POINT OF INTEREST
- SANDIA NATIONAL FOREST
- SANDIA MOUNTAIN WILDERNESS

WARNING
 UPPER LA LUZ TR #137 AND CREST SPUR TR #84 TRAVEL ALONG STEEP EXPOSED AREAS. TRACTION DEVICES HIGHLY RECOMMENDED IN WINTER.