

NEW MEXICO CROSS COUNTRY SKI CLUB



December 2022

Photo courtesy of Enchanted Forest Cross Country Ski Area

Upcoming General Club Meeting

It's that time of the year again. Time to receive the Pagosa Springs grooming report...and cry because our mountain is still bare. Don't despair! Come to our annual **Holiday Extravaganza** meeting held at **The Albuquerque Garden Center on December 8th from 7-9**. This special meeting will be a club social event to celebrate the winter season. Come and enjoy mingling with old friends and meeting new members. Please bring your favorite snack, appetizer, or dessert to share. Do you dabble in arts, crafts, or photography? If so, please feel free to bring them with you for display or for sale! Let Terri know so we can have a table set up for you. (Terri: 505-450-9961) As always selling new/used ski equipment is encouraged. Costumes are encouraged too! We could use a few elves at this party! (We request that everyone wear masks at the meeting.)

Board Members Meeting

NMCCSC board members met via zoom on November 17. Our website guru, Lisa is revamping our entire website and has created a new site. It will launch in January! Want a sneak-peak? Go here. <https://ski.nmccskiclub.org>. Lisa is looking for public comments so that we can have the best website possible for our club. Thanks Lisa!

This is our LAST paper newsletter. We are switching to an all electronic version starting next month.

Instruction

- Beginning skier classroom in-person session **Dec 13 6:00-7:30** at the **International District Library Conference Room** (located on Central Ave just east of Louisiana Blvd, on the corner of Central and San Pablo St. NE)
- Virtual classroom session (zoom): **Dec 20 6:00-7:00**
- Beginner on-the-snow: **Jan 7 at Ellis trailhead (pending snow)**
- Advanced/beginner-intermediate clinic with Jon Delis: **Jan 8 at Ellis trailhead (pending snow)**
- Intermediate downhill technique: **Jan 21 at Ski Sante fe *Participants will need to buy a lift ticket and chip in to help defray costs of lift tickets for instructors.**
- Telemark Clinic: tbd (February)

I (Dana) will be using the NMCCSC Meetup site for sign-ups and communication. Looking forward to helping our fellow members learn valuable skiing techniques this season!

- Dana Price



Membership

At our November general club meeting we voted to increase our membership fees to compensate for the higher cost of website and meeting space. We voted in favor of increasing our membership fees and including a family membership fee.

The cost of membership has gone up from \$20/year to \$25 beginning January 1st, 2023.

The first-year \$1.00 membership for individuals under 40 years of age will remain unchanged. Our **Family Membership option** which grants full membership privileges

to two members residing at the same address will be **\$45.00 per year.**

We are always striving to include ways to introduce cross-country skiing to those who have never tried it or are curious about it. How can you help?

✳ If you have video clips of yourself cross-country skiing, we would love to post it on our club website! Footage from a GoPro or similar camera is especially desirable. Short clips of the real experience of skiing are a great way to share the magic of our sport.

✳ If you have skis, boots, and/or poles your family members no longer use, the club would be very interested in using them to pilot a lending program for new members. We are interested in all sizes including those for children and youth (since small sizes cannot be rented locally). A lending program means new members need not invest a lot of money before discovering the magic of skiing. This pilot program will necessitate the need for storage for club equipment. The board is currently discussing this possibility.

Club Car Trip - CRESTED BUTTE !!

The votes are in! Once again Crested Butte has proven to be the number one choice of the NMCCSC members. And why not? What's not to love? It is the Nordic Ski capital of Colorado, it offers over 50 km of groomed Nordic trails for ALL ability levels, majestic backcountry routes and the downhill ski resort just a free shuttle ride away. We will again be staying at the Old Town Inn, close to the Nordic Center, and within walking distance to lots of fabulous restaurants, great shopping opportunities and to the town shuttle. The trip will



be from Friday January 27th until Monday January 30th. The cost for the hotel is \$265 per person, double occupancy. Look for the email telling you how to sign up and join the fun! Questions? Email David D'Antonio at lbghose@aol.com.

Here is a link to the Crested Butte Nordic Center:
<https://cbnordic.org/ski-snowshoe/day-passes/>

Thanks, and hope to see you on the slopes!

David D'Antonio

Bus/Long Car Trip Chair



Harry Gates Hut

Hello, hut skiers! Guess what? Our hut trip is FULL. We've had trouble filling trips the last couple of years, so hopefully this means we'll be able to continue to offer hut trips for the club in future years! Want to be on our waitlist? Contact either Doug or Guy.

Doug Erb will be leading the trip this year. He is working on securing lodging for the night before we hit the trail and we are arranging car-pooling. Hut goers are discussing logistics and meal preparation.

Day skiing around the hut consists mostly of Nordic touring and glade skiing on nearby Burnt Mountain.

Trip dates, including travel, are *February 6, 2023 to February 11, 2023 (dates in the hut are Feb 7 - 9)*. Travel dates include an extra day to get back home after exit day, due to the length of the ski out (it can be a time-consuming descent) and the driving distance home.

If you are going on the hut trip, you might be wondering what to bring and how to prepare. Besides increasing your physical stamina, take a look at the following link to help guide you on gear.

<https://www.huts.org/Reservations/Howtoplanahuttrip.php#winter>

For further information, contact Guy Miller or Doug Erb.

- Guy Miller



NM Ski Areas Information

Are you looking for some up-to-date information on what New Mexico has to offer for skiing? Click on the following link to the Santa Fe New

SANTA FE + NEW MEXICAN

Mexican magazine for the 2022-2023 Winter Guide. Here you can read about the latest re-building efforts at *Enchanted Forest*, where to

ski in New Mexico, and what ski resorts are doing to tackle climate change.

<https://enewmexican.com>



British Columbia Trip

Are you interested in Skiing in **Canada** this coming season? Peter Marks is looking for folks to join him at Silver Star and Sovereign Lake in beautiful British Columbia for a March adventure.

There are two nordic areas which are actually separate though you can easily ski between them. The two areas consist of 105km of groomed trails that will satisfy all ski levels. Silver Star also has alpine skiing and some of the chairlifts can be used by XC skiers to get to trails higher up on the mountain. All of the

accommodations that Peter is familiar with are ski in/ski out. When he went he rented a house with others through VRBO though there are several hotels that are reasonably priced especially considering the favorable US exchange rate with the Canadian dollar. The closest airport is in Kelowna which is about an hour shuttle ride to Silver Star. When he flew there in the past, he was able to fly through either Seattle or Phoenix. It appears that Seattle is the only current US airport with a direct flight to Kelowna.

Max Shepard prepared an estimate of what this trip might cost if you are interested and I

have attached his estimate in an email to club members.

“The current plan is to fly up there on either Monday February 27th or Monday March 6th and ski for 4 days. I hope to hear from some of you. If you are interested, please let me know which week works best for you in the next couple of weeks as some of the accommodations are starting to fill up. You are not committed to anything if you say you are interested.”

Here is the Silver Star website: <https://www.skisilverstar.com>

-Peter Marks

Important Websites

Snow Report Sites	
OnTheSnow.com	Has the latest snow report for ski resorts in NM and CO.
www.wcc.nrcs.usda.gov/snow	Includes Snow Telemetry and Snow course data for snowpack information. Click on the blue dots at the site for updated info about current snow conditions.
https://sandiapeak.com/snow-report/	Our own Sandia Peak snow information
https://www.sandianordic.org	Sandia Nordic's latest grooming report news for the Crest.



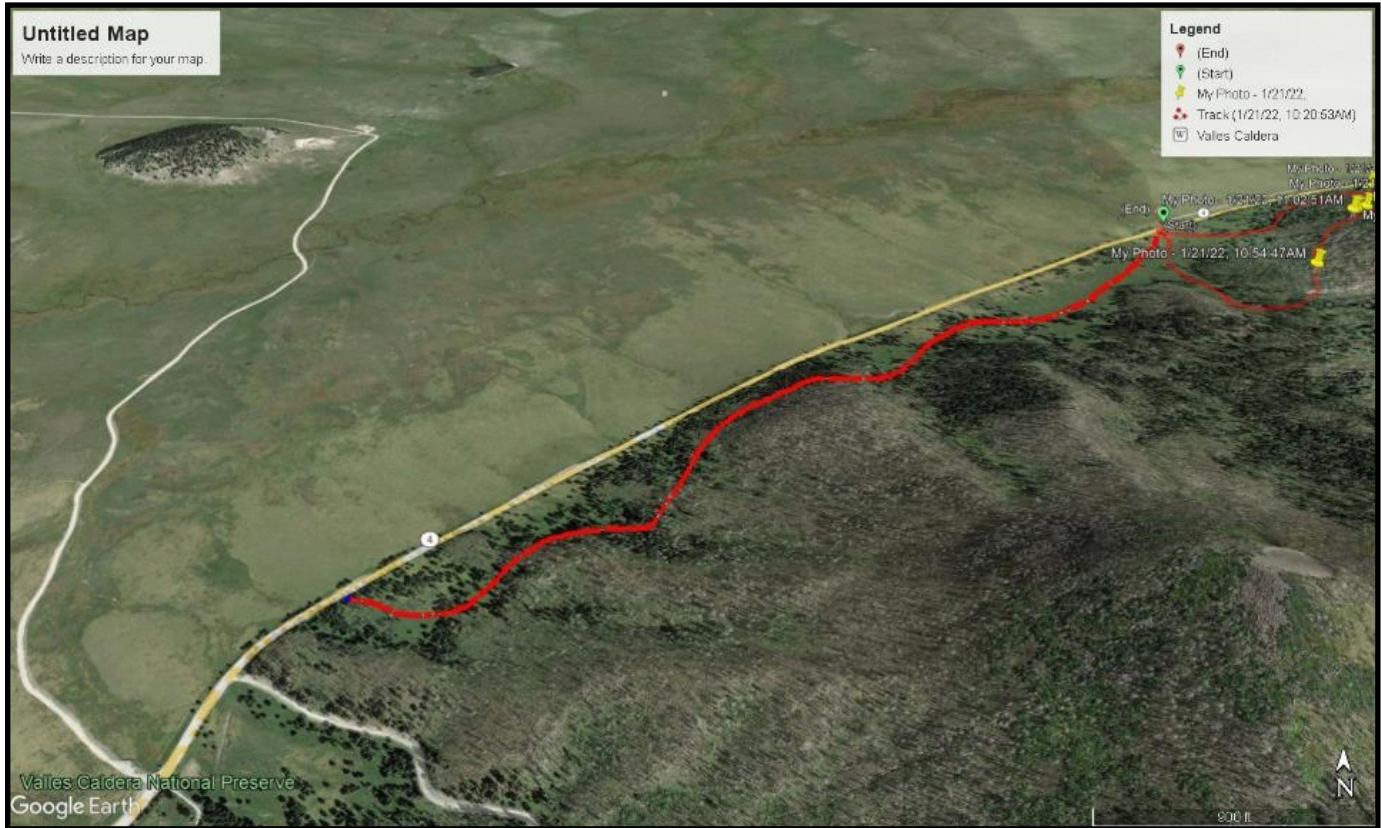
Avalanche Outlook	
US	https://avalanche.org/
Canada	https://www.avalanche.ca/map
Taos	http://taosavalanchecenter.org
Crested Butte	http://cbavalanchecenter.org/
Northern NM	http://www.nnmae.org/
Some of the sites from https://avalanche.org	
Colorado	http://avalanche.state.co.us/
Utah	https://utahavalanchecenter.org
Tetons	http://jhalanche.org
Yellowstone	https://www.mtavalanche.com
Sawtooths	https://www.sawtoothavalanche.com
Central Sierra	https://www.sierraavalanchecenter.org
Eastern Sierra	http://www.esavalanche.org

Mailing list: NMCCSCEgroup@mailman.swcp.com **Website:** www.nmccskiclub.org
Meetup: <http://www.meetup.com/New-Mexico-Cross-Country-Ski-Meetup-Group/>
Facebook: <https://www.facebook.com/groups/1663936723893594>

Trails Maintenance

Our trails maintenance crew has been hard at work again preparing the trails for the 2022-2023 ski season. They have already racked up over 150 volunteer hours. Sam and Michael have also discovered a beginner, Class I, 1.6 mile trail that is located on an old road to

the west-southwest from the Coyote Call Trailhead on NM-4 on the Valles Caldera National Preserve in the Jemez Mountains. The west trailhead is located at the first highway pullout east of the main gate at the VCNP.



On November 26, Michael Arndt, Leslie LaBry, Mike Meier, and Sam Beard removed about 2-dozen downed trees from the middle part of the Ladera Trail. Many of the trees had fallen due to wind events and killed by the Cajete Fire. The work done required using large saws to cut the trees and clear the original route.

Photos by Leslie LaBry



Mike Meier, Sam Beard, and Michael Arndt cutting the largest log



Sam cutting a large log with a Stihl MS-261 saw with an 18-inch bar

Skis from Overseas: Answering the Sirens' Call

-by James Mathis

Have you found yourself wading through the sea of online ski shoppes? In search of a good (great!) price for your next ski? Recently, I took to The Internet of shopping for skis and avalanche gear. We take many journeys through life as we seek new adventures— planning for the expected; anticipating the unexpected. And, at journeys end, learning— hopefully— something worth sharing. My shopping adventure took me to Varuste in Finland, good (great!) pricing and the not-so-readily available Norwegian ski by Åsnes. Allured by the Siren's call: I bought **skis** and **avalanche beacon kits** from overseas, and perhaps my international online shopping adventure can prepare you for:

What to expect if you purchase skis from overseas

- — **Bank Fraud ALERT!** — —
- — **Register with US Customs as an Importer** — —
- — **Describe the use-case of the electronics (avalanche beacon)** — —
- — **Pay an import tax** — —

Are you registered as an "Importer"?

Are you buying gear that originates in China?

Does that gear have technology or electronic chips from China?

Are you buying communications equipment?

If you answered, "yes", then get on board, it's not *that* hard.

Be prepared for some extra costs at the checkout and post-facto from US Customs:

- check the **shipping cost** (might be reasonable; might be extravagant!)
- pay an **import tax** (fee) as invoiced from the shipping provider (seems about 6 to 7%)
- Tack on a **credit card international transaction fee** (was 3% for me)

— Credit Card Transaction DECLINED ! —

No problem. It's just a little inconvenience. Let your bank know you're buying from an overseas merchant, else expect a slight hiccup at the online checkout. For an international credit card transaction, you might get a text message from your bank fraud detection notifying you of unusual transaction activity. The text message asked me to verify a few prior transactions as legitimate (or not), and once I approved those, then directed me to go through the merchant checkout credit card submission a second time— and the purchase was verified and complete.

— Don't let your gear fall into a Tree Well —

If you're not registered as an Importer, then your package will likely get held in a **Clearance Delay** at the US port of entry and, if after **5 days lingering**, runs the **risk** of being **sent back to the vendor**— "**Noooooo!**" FedEx won't pro-actively contact you. I only realized the issue, when I periodically checked on the tracking status and saw the status: "Clearance Delay". You must contact the shipping provider (in my case FedEx) to get the process going, and get your gear out of the Tree Well:

1. Contact a FedEx Customs Trade Specialist at 888.327.3395
2. FedEx will e-mail a link to the "DocuSign" website to access the the required **Customs and Border Protection form "CBP 5106** form.
3. Create a "DocuSign" account, so you can fill out the form, sign it, and FedEx can file it.
4. FedEx e-mails to you step-by-step instructions to assist you with filling out the form.

For the avalanche beacon kits, I also needed to provide— via a separate e-mail to the FedEx Customs Trade Specialist— a description of the search-and-rescue beacon function, as the gear was flagged as potential "communications devices" from China.

With form **CBP 5106 complete** and an **explanation of the beacons** sent, the skis and avalanche kits from Varuste cleared the "clearance delay" and were **finally on their way**.

Some of our journeys are on the back of skis; some of these journeys are typed on keys; and, don't most of them take us through a proverbial forest of trees?

This time 'round, I found my fingers doing the walking— in search of skis and backcountry avalanche gear— around the globe, from France to Germany, eventually landing in Finland; a store in Helsinki; Varuste. Maybe you've discovered Varuste online— this Nordic Super Store on your own shopping adventure across The Internet? Maybe not? Let me tell you a tale of innocence (ignorance) from keyboard to ski-board— the things I didn't know about; how to get the things we dream about.

Perhaps you, too, have virtually navigated the internet sea, seeking your next adventure ski with a discounted price as deep and steep as our powdered dreams. You've discovered so many skis, so many stores, so many sales, and of course, so many reviews. My search led me to "deep (sea) discounts" across the Atlantic in Finland, where I heard the allure of the sirens' call, attracted by new beautiful Norwegian Åsnes skis— the promise of ultimate snowbound bliss— at prices no one could resist. However, perhaps you have been like me: hesitant to set sail and buy from overseas, unsure of the legitimacy. Deals too good to be true? Is this online store a scam? (A wee voice in one's head questioning, "what about REI? What about Neptune Engineering in Boulder, Colorado— should I road trip... to the brick and mortar store") Alas, I followed the Siren's call: to Varuste in Finland my credit card did sail.

Side-quest:

If you haven't found The Internet's great forum for back country cross-country skiers and telemark fanatics, *Telemark Talk*, then here's a ticket. Fantastic user experiences with gear.

Assured by the fine folks at Telemark Talk:
The Varuste shop in Finland? It's legit.

<https://varuste.net/en/>

Ski reviews? Galore!

<https://www.telemarktalk.com>

Back at the ol' Varuste web shoppe, what pops up:

1. The ski(s) I'm looking for
2. The avalanche beacon kit I'm going to need
3. And, "campaign" pricing that sang like the Sirens' call! (Varuste calls "sale" prices "campaign"— I kinda like that verbiage. It's like "hiring" an automobile in England vs. "renting" a car in The States. I digress...)

I add all the gear to my Varuste basket, gleeful with the selections and prices, then— the shipping.

CAUTION: shipping pricing! Be mindful of the shipping options at Varuste, they can go wild depending on what you put in your shopping cart.

Varuste doesn't always offer FedEx (much cheaper) as a shipping provider, but DHL (woah! More expensive!) is always on offer. DHL prices can be from 2x to 3x those of FedEx (\$160 DHL vs \$60 to \$70 via FedEx); and, I can't make sense of why some gear qualifies for FedEx, while others not— go figure. In my cart-filling experience, some skis showed with FedEx as an option, then adding— or switching to— a different ski in the cart caused the (much cheaper) FedEx option to be disappeared and only DHL as the shipping provider.

Ultimately, I did answer the Varuste sirens' call, and the skis— and gear— arrived just fine from Finland; but, not without a few days delay in Newark, New Jersey, adding a bit of drama and suspense to the trek. I am now a registered "Importer", on file with the U.S. government, having procured from out of country both skis and technology.

Perhaps, you hear the Siren's calls of ski deals. Hopefully, my experience can help you decide if the overseas "campaign pricing" offsets some additional international costs.

Now you know what to expect, when you buy skis from overseas:

- International credit card transactions: fraud alert and transaction fee (~3%)
- Importer tax registration (~6 to 7%)
- Shipping charges (FedEx \$70 versus DHL \$170 to \$300 !!)
- Information about electronics/communication devices originating from China

Let it snow!
Let's get out and ski!

If it don't snow, we can't go, and all of our gear— yours and mine— needs adventure time with our New Mexico Cross Country Ski Club friends!

Help! I've fell into a tree well!

Thanks for snow-plowing to the end. Here's what the Sirens' lured me into buying.

Plus, I'm now very much committed to learning how to grip/kick wax! Plunge! — My next adventure!

- James



Barryvox avalanche beacon kit with probe and shovel



Åsnes Cecilie BC

Kicker skins (Åsnes X-Skin system in nylon and mohair)



Åsnes Falkentind 62 explore

Poles (Åsnes Nansen 2-section collapsible)



CALENDAR

2022-2023

December

Dec 8	General Club Meeting - HOLIDAY SOCIAL - ABQ Garden Center 7-9
Dec 13	Beginner ski in-person classroom lesson 6:00-7:30 at the International District Library
Dec 15	Board Meeting via Zoom
Dec 20	Virtual (zoom) beginner lesson - 6:00-7:00

January

Jan 7	Beginners On-the-Snow lesson - Ellis Trailhead (snow dependent)
Jan 8	Advanced beginner/intermediate technique lesson with Jon Dellios Ellis Trailhead (snow dependent)
Jan 12	General Club Meeting - ABQ Garden Center 7-9
Jan 14 & 15	Chama Chili Ski Classic - groomed course, clinics and races
Jan 21	Intermediate Downhill techniques - Ski Sante Fe
Jan 26	Board Meeting via Zoom
Jan 27-30	Ski Club car trip - Crested Butte

February

Feb 6-11	Harry Gates Hut Trip
Feb 9	General Club Meeting - ABQ Garden Center 7-9
Feb 23	Board Meeting via Zoom
TBD	Telemark Clinic
TBD	Canada trip dates

March

Mar 9	General Club Meeting - ABQ Garden Center 7-9
Mar 23	Board Meeting via Zoom



Board Members 2021-2022			
President	Bill Heitz	259-8745	President@nmccskiclub.org
Vice President	Marleen Brown	452-7202	VicePresident@nmccskiclub.org
Secretary	Nancy Jenkins	269-0855	secretary@nmccskiclub.org
Treasurer	Max Shepherd	270-5258	Treasurer@nmccskiclub.org
Day Trips	Guy Miller	306-2628	DayTrips@nmccskiclub.org
Long Bus Trips	Guy Miller & David D'Antonio	306-2628 553-2795	BusTrips@nmccskiclub.org
Hut Trips	Guy Miller	306-2628	HutTrips@nmccskiclub.org
Car Trips	Scott Mitchell	977-8893	CarTrips@nmccskiclub.org
Newsletter	Amy Mathis	808-344-8543	Newsletter@nmccskiclub.org
Instruction	Dana Price	417-9787	instruction@nmccskiclub.org
Membership	Nancy Shane		membership@nmccskiclub.org
Meetup & Social Media	Bet Gendron	228-8025	SocialMedia@nmccskiclub.org
Programs	Peter Marks	414-3055	programs@nmccskiclub.org
Mailing/Egroup	Marilynn Szydowski	332-8018	egroup@nmccskiclub.org
Refreshments	Phyllis Pryor & Terri Elisberg	980-3241 450-9961	refreshments@nmccskiclub.org
Trails	Sam Beard	828-0673	trails@nmccskiclub.org
Web Site	Lisa Hales	925-528-8393	website@nmccskiclub.org
Finding Us			
Web Page	http://nmccskiclub.org		
FaceBook	https://www.facebook.com/groups/1663936723893594		
Mail	New Mexico Cross Country Ski Club PO Box 50534 Albuquerque, NM 87181		

New Mexico Cross Country Ski Club
PO Box 50534
Albuquerque, NM 87181