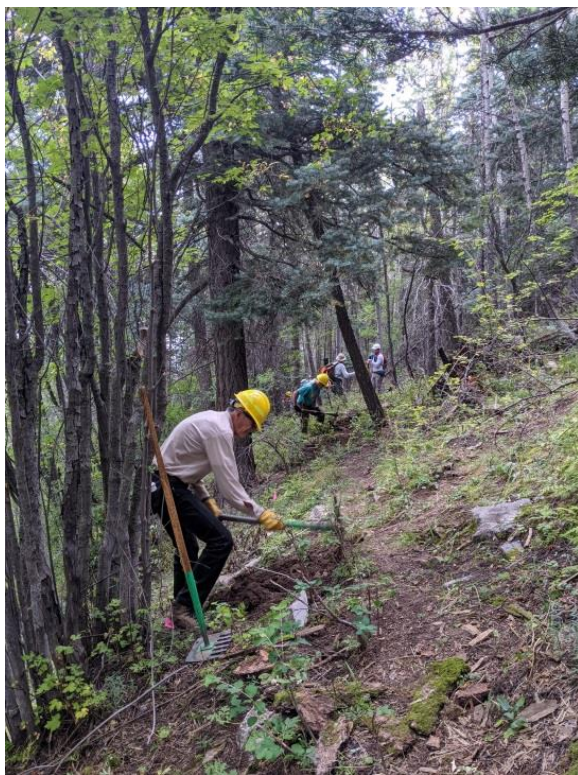


On Thursday, September 16, nine FOSM volunteers were joined by YCC crew members Seth Castillo and Skyler Mund for trail work on the new Challenge Trail extension. In the morning the crew arrived at the work site, where the tools had been cached the previous week, to discover that the rock bar and at least one McLeod had walked off in the interim. Yes, you read that right. This was a downer, but despite the lack of a rock bar steady progress was made as the crew continued building new trail northwards. This session's section was steep, leading into and out of a gully; some rock cribbing was required in spots. Temps were cool (until rounding a corner onto a south-facing slope), and soil conditions were dry and rocky.

The FOSM volunteers were Jenny Blackmore, Sim Cook, Byron Garner, Jim Houle, Jeff Huser, Mike & Pat Madden, Rich Miller and Eric Russell.

Photos by Jenny Blackmore.



Getting started on a cool morning





Rounding the corner



Here's how it's done, lad.



New guy!



We don't need no stinking rock bar...

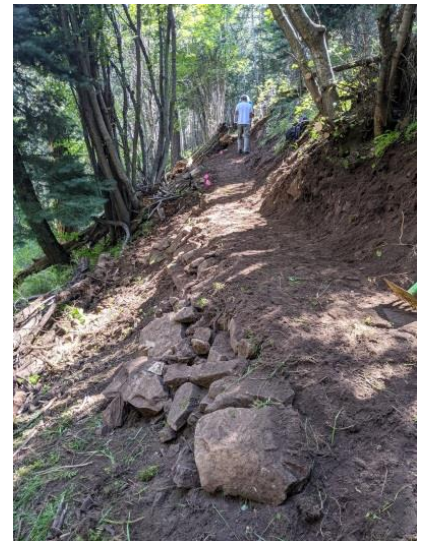




Before



During



After



It was in the ground. Now it's not.



Ditto