

On Thursday, November 11th, nine FOSM volunteers continued building northward on the new Wagon Trail extension towards the Sulphur Canyon Picnic Area. Temps were chilly, but the morning felt warm on the sunny east-facing slope. By late morning the crew began moving into steeper, rockier terrain. Next week a sledge and an extra rock bar could prove useful!

The volunteers were Jenny Blackmore, Phil Cromer, Byron Garner, Bruce Hansche, Jim Houle, Mike Madden, Pat Madden, Rich Miller and Steve Roholt.

Photos by Jenny Blackmore unless otherwise noted.

---

By the end of the work session the terrain was getting steeper.



AM



PM

Hands and feet make good tools too.





Roots and rocks



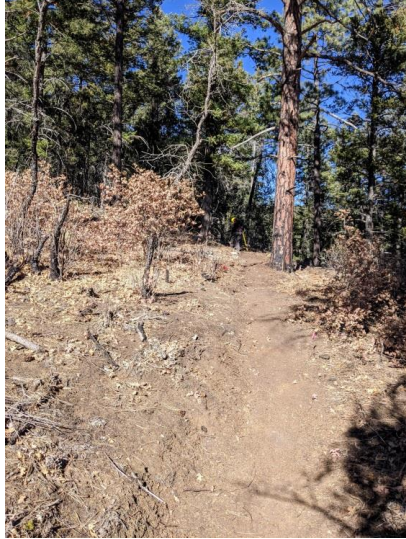
Photo by Rich Miller

Decisions...



Photo by Rich Miller

Cutting a high-stump



Before and after

