

On Thursday, December 16th, twelve FOSM volunteers continued building northward on the Wagon Trail extension towards the Sulphur Canyon Picnic Area. After the recent moisture, and with starting temps around freezing, the ground was frozen and challenging to work with. It thawed out gradually over the course of the day. The crew focused on finish-work from the last session, as well as benching in new tread. We're rounding the last corner, with the PA in sight.

The volunteers were David Bernstein, Jenny Blackmore, Sim Cook, Byron Garner, Bruce Hansche, Jim Houle, Jeff Huser, Mike Madden, Pat Madden, Rich Miller, Eric Russell and Cleve Sharp.

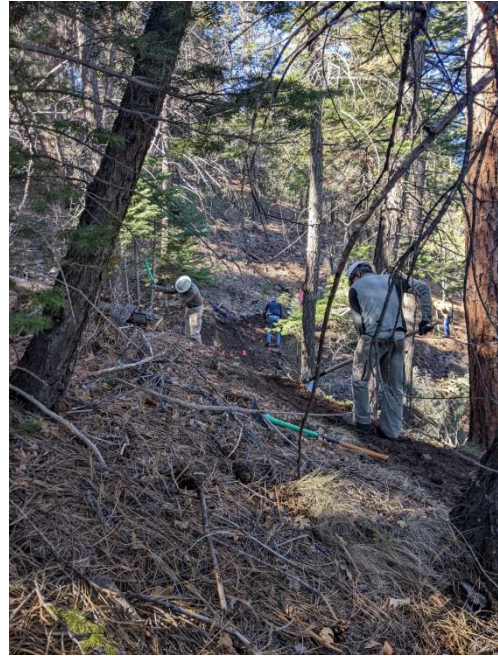
Photos by Jenny Blackmore.



The Maddens tackle the tough turf



Byron, Rich, Mike, Sim



Jeff, Cleve, Byron, Sim



Eric, Bruce



David, Jim



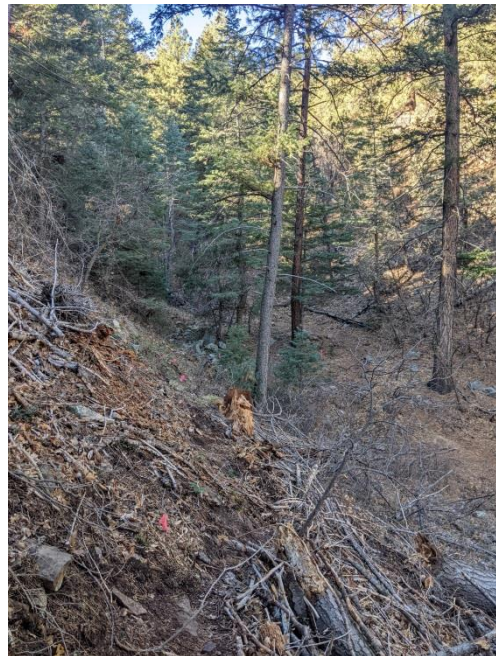
How to herd horses (and bikes)



Nice in the sun



Steeper terrain (Mike, Bruce)



Looking ahead. See the flags?
They mark the *downhill* edge.