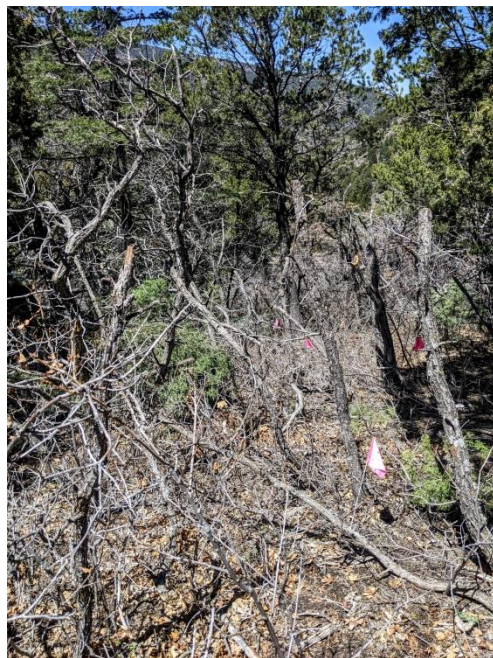


On Thursday, April 21, eleven FOSM volunteers switched gears for one session to work on a reroute of the Palomas Peak Trail, off of NM-165, joined by Russell Berman, SRD Trails Foreman, and Lindsay Frensz, the new SRD Trail Crew Lead. Mark Grazier and SRD staff are planning a work day on May 7th for local climbers, to help out with maintenance along the trail. In preparation for the May work day the FOSM-Thursday volunteers lent their expertise to the tougher and trickier aspects of the work, building new tread along the rerouted section through deep duff and thick oak. Temps were cool in the morning, with a nice breeze starting as things warmed up later in the day (the day before the Friday wind storm).

The FOSM volunteers were Claudia Bergsohn, Jenny Blackmore, Luis Cuadros, Byron Garner, Mark Grazier, Jim Houle, Jeff Huser, Mike Madden, Pat Madden, Eric Russell and Roland Stumpf.

Photos by Jenny Blackmore.



See the pin flags? We're not in Placitas anymore...
(No "after" shot of this... but it came out nice 😊)



Mark starts his day excavating some high-stumped oak.
Hey, you were the one who brought us here.



Eric tackles an old stump
(Pat, Russell)



Claudia tackles a root
(Jim, Jeff)

Sensing a theme here...



Jim tackles a “rockberg”



Byron tackles Stonehenge



A little later... progress!

(Oaks are left “high-stumped” for better leverage when pulling them out)



Luis does some subtle shaving while Roland goes whole-hog



L-R: Jeff, Pat, Mike, Roland.
Mike is working on the "triangle"



The completed triangle junction where the reroute meets the North Mystery Trail (Faulty Trail)

(Not pictured: volunteers used dead branches to close off/obliterate a long section of the old trail when the corresponding rerouted section was complete)

STAFF PHOTOS



Welcome Lindsay!

Russell loves his job.

(Russell pin-flagged the reroute
and cleared the corridor)





Before



During (from farther back)



During & After