

On Thursday June 30th, thirteen FOSM volunteers continued working southwards from Tree Spring on the Challenge Trail extension, while Russell Berman and the SRD trail crew cut corridor up ahead. The volunteers took their time building new trail on steep sideslope; some worked on wrapping up finish-work and rock cribbing from last session. Clouds rolled in around lunchtime to help with the heat.

The volunteers were Joe Beman, Jenny Blackmore, Don Carnicom, Luis Cuadros, Byron Garner, Bruce Hansche, Jim Houle, Jeff Huser, Larry Larrichio, Mike Madden, Pat Madden, Ken Nicholson and Rav Nicholson.

Photos by Jenny Blackmore unless otherwise noted.



Larry widens last week's tread



Jim returns to work a week after hand surgery!



Jeff and Pat



Bruce and Mike



Bruce turns rock into “crush,”
to bring up the level of the tread



Luis works a new section



Some skillful McLeod-wielding by Don and Joe



Team Madden



Team Nicholson & Co.



Photo by Jeff Huser

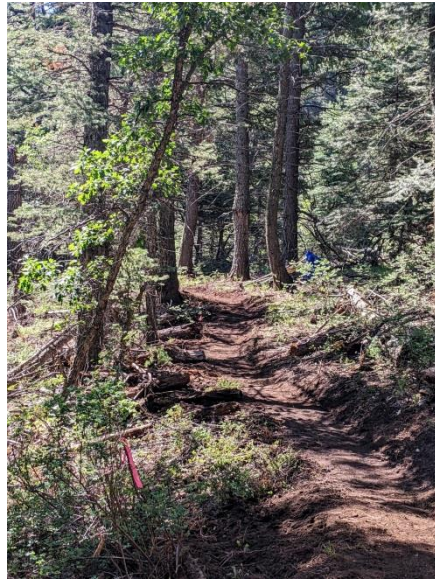
Jenny moves a large stick



Bruce and Joe move a large rock



Rav, Don, Byron,
Camouflage-Ken,
Luis and Russell
enjoy the shade



Before & after

