

On Thursday September 15th, fourteen FOSM volunteers continued building new tread on the Challenge Trail extension, working in a masticated area eastward toward the old Crest Road. Some of the crew did finish-work on trail built last week, while others cleared debris and cut new trail. By late morning a good portion of the crew had turned a corner back onto steep, rocky terrain which also happens to be full of mature scrub oak (no photos). SRD Trails Foreman Joseph Jaffa-Martinez and the SRD crew had come through previously to clear corridor and high-stump the oaks for better leverage when removing them by the roots. A cool sunny day turned into a warm sunny day before lunch; those working on the steep section were glad to be in the shade.

The volunteers were Joe Beman, David Bernstein, Jenny Blackmore, Sim Cook, Luis Cuadros, Bruce Hansche, Jim Houle, Ralph Kopp, Mike Madden, Pat Madden, Tony Pachelli, Eric Russell, Cleve Sharp and Roland Stumpf.

Photos by Jenny Blackmore.



This week's finish-work crew – Jim, Luis, Pat (and Jenny)
Later Pat jumps ahead to build new trail

Some beautiful old Ponderosas in this area



Roland, Ralph



Bruce, Tony, Joe
(Sim, David, Mike)

... and plenty of duff. Sometimes hands work best for clearing.



David, Mike



Bruce, Roland

Everyone touch your toes!



Ralph, David, Cleve, Tony....



Joe, Cleve, Tony, Sim...



Tony wields a mean McLeod.
Cleve contemplates his next move.

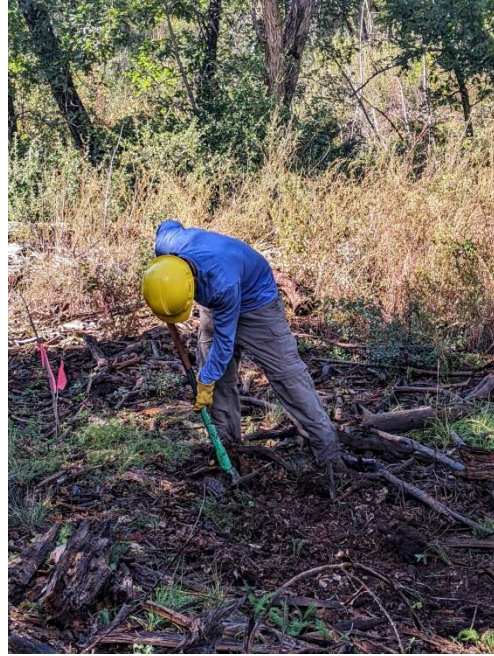


The photo doesn't do justice to the two whale-rocks (and countless others) that Eric ultimately removed from this innocuous looking section.

Still on the flats in the first part of the day



David



Ralph



Sim, Tony, Cleve, Joe, Eric



Joe



Cleve opts for low-stumping here. Wise move.

A glimpse of what lies ahead



Hmm, this one's gotta go
L-R: Eric (Tony), Joe, Bruce