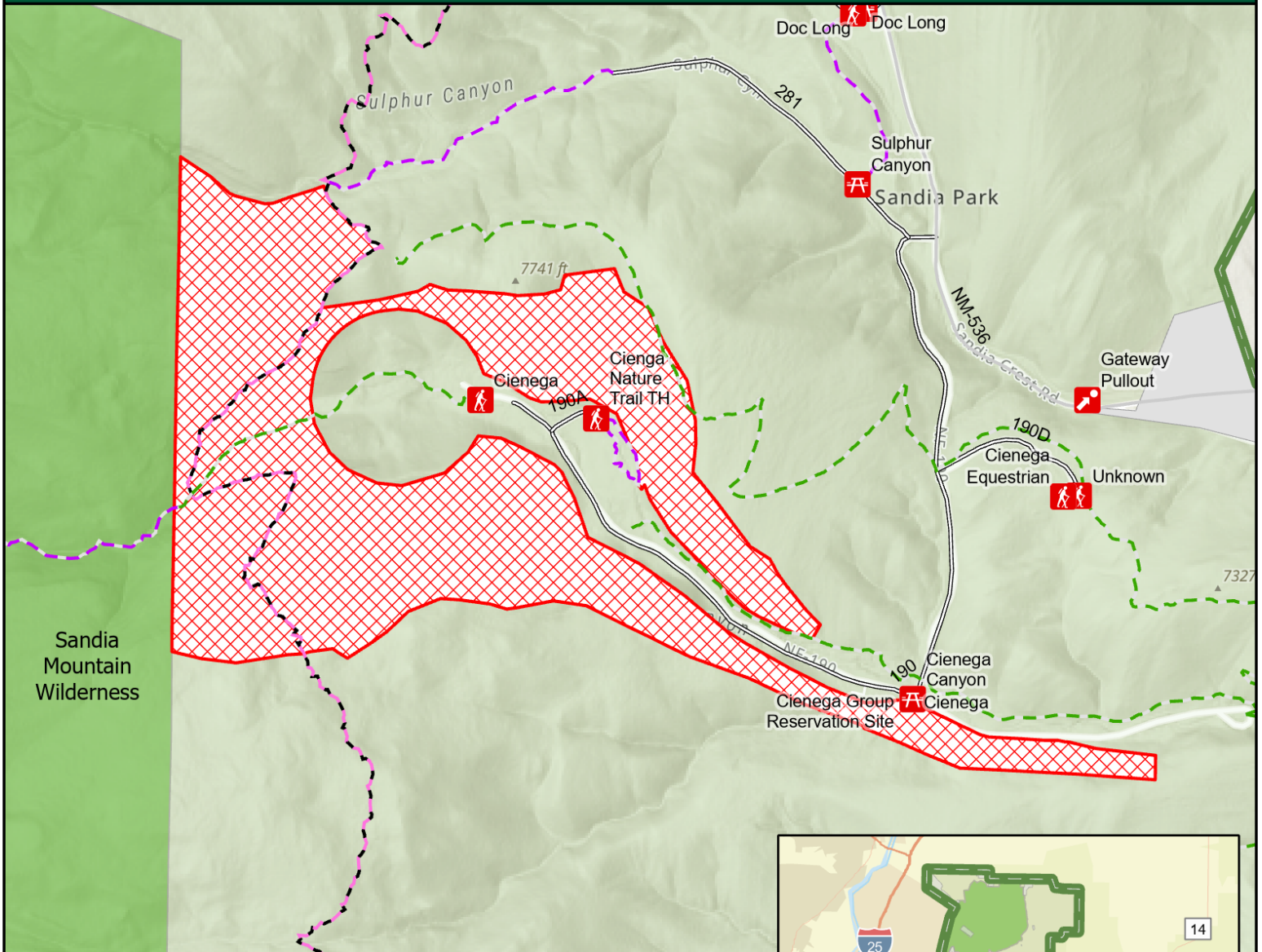
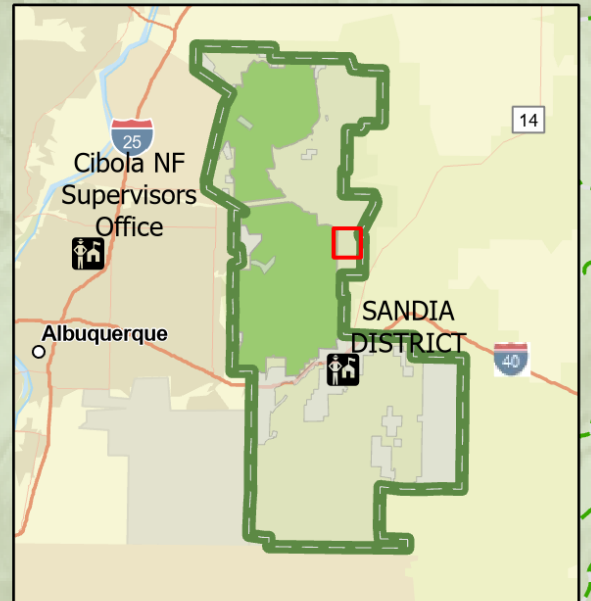




# SULPHUR CANYON PRESCRIBED FIRE | SANDIA RANGER DISTRICT



- BIKE - BICYCLE
- HIKE - HIKER/PEDESTRIAN
- PACK - PACK AND SADDLE
- 3 Roads Open to Highway Legal Vehicles Only, Yearlong
- State or US Highway
- Sulpher Canyon Rx Pile Burn



Coordinate System: NAD 1983 UTM Zone 13N  
 Projection: Transverse Mercator  
 Datum: North American 1983

Date Published: 1/13/2023

USDA is an equal opportunity provider, employer and lender

0 0.25 0.5 Miles

This product is reproduced from geospatial information prepared by the USDA Forest Service. Geospatial information and GIS product accuracy may vary. Using GIS products for purposes other than those for which they were created may yield inaccurate or misleading results. USDA Forest Service reserves the right to correct, update, modify or replace GIS products without notification