

On Thursday November 16, fourteen FOSM volunteers, accompanied by SRD Trails Foreman Jen Medina-Gray, returned to the Osha Loop extension, continuing to build south uphill towards the new 10KN alignment. The FS had been out the day prior, to pin-flag both ends of the extension (Jen Medina-Gray; Cibola NF Trails & Wilderness Manager Russell Berman; and Cibola NF intern Dorothy Hendrix). On Thursday the weather was cloudy and cool, and the wind picked up before lunch. The crew reached the end of the pin-flags at the south end of the extension. (As is the usual practice, the line was not flagged all the way to the connection on either end. The crew plans to complete the upper and lower junctions on the same day, then close off the old 10KN alignment – hopefully this season!)

The volunteers were Dan Benton, Claudia Bergsohn, Jenny Blackmore, John Braly, Phil Cromer, Luis Cuadros, Byron Garner, Jim Houle, Andrew Leon, Laura Leon, Tony Pachelli, Bill Perkins, Eric Russell and Roland Stumpf.

Photos by Jenny Blackmore unless otherwise noted.

.....



Photo by Dan Benton



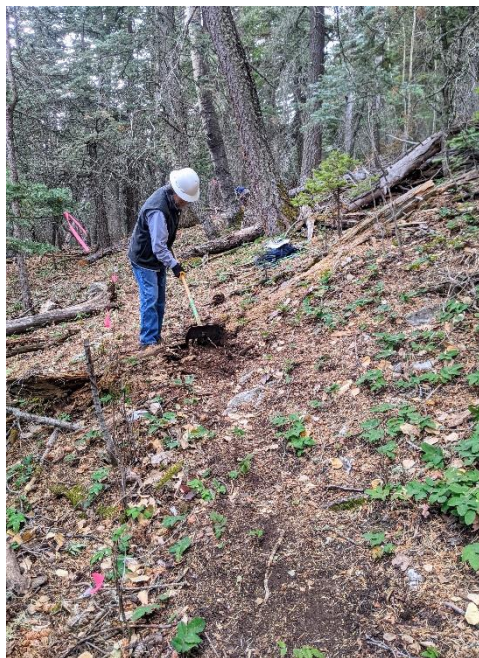
Getting started. The sideslope is gentle, but below the duff boulders lurk.



Jim, Claudia  
Boulders not pictured. They made do with no sledge.



Dan



Phil



John





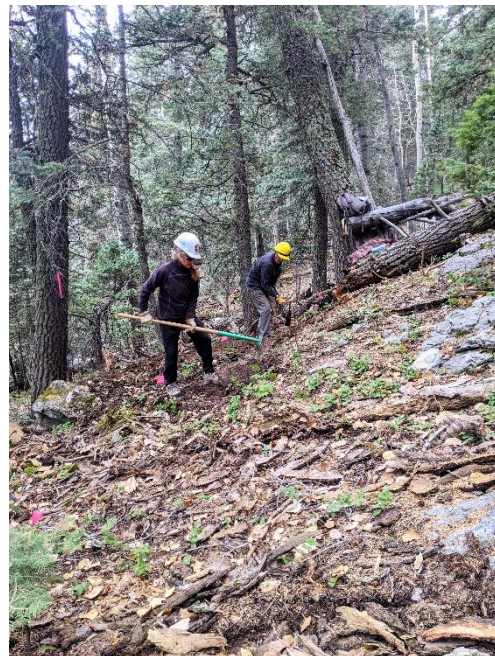
Eric



Byron, Phil



Meanwhile, Luis and Tony return to their benching project from last week.



Wash, rinse... Claudia finishes a section and leapfrogs to a new one



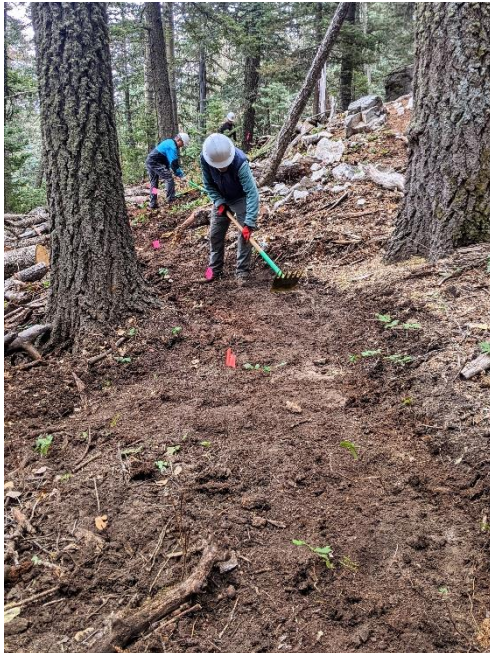
The new tread starts to take shape



Phil



Roland



Bill, Tony



Laura clears the downslope





Andrew fishes one out



Photo by Dan Benton  
Team Jen(ny)!



Photo by Dan Benton



Before/after on Luis & Tony's turn