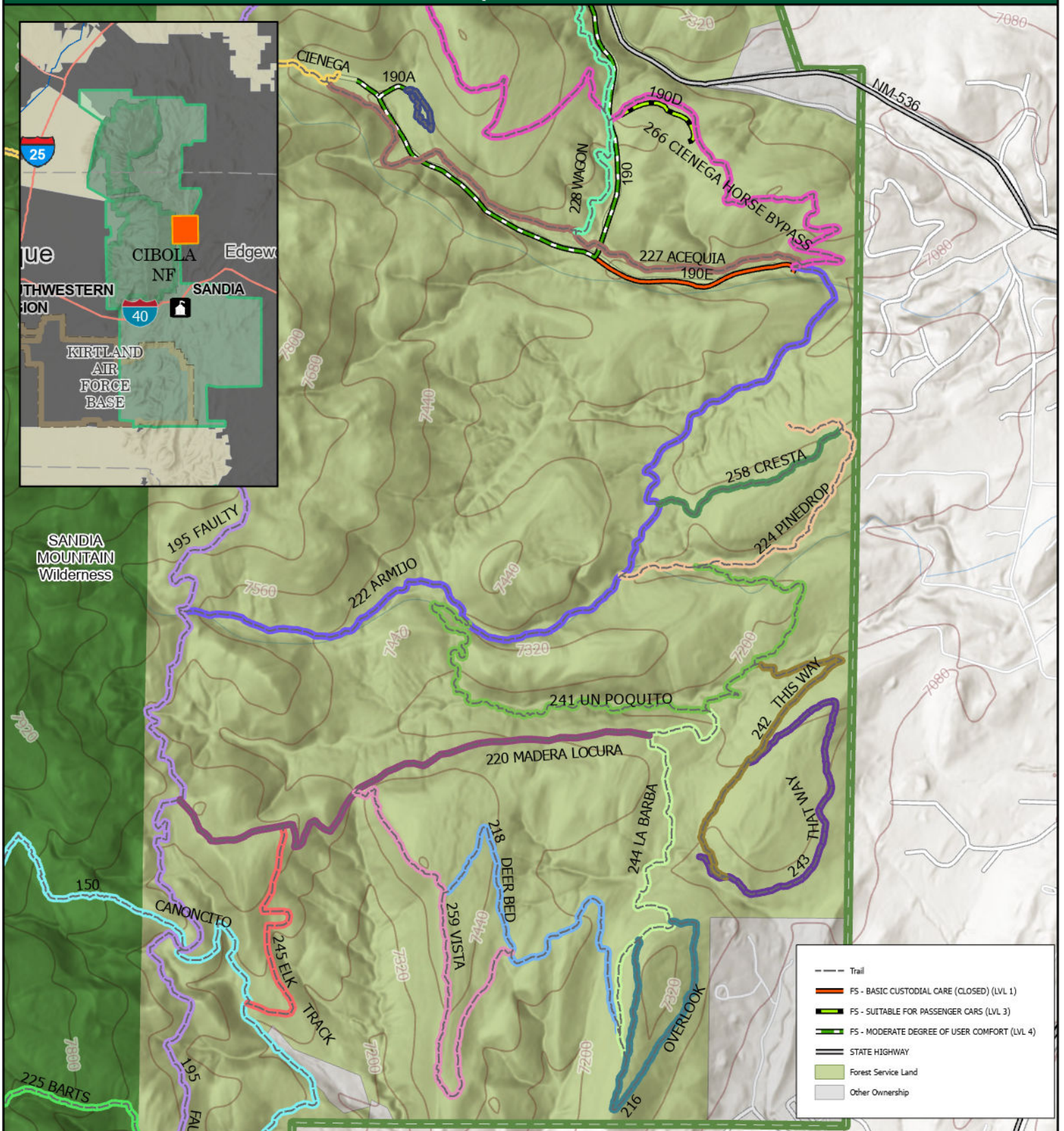




Forest Service  
U.S. DEPARTMENT OF AGRICULTURE

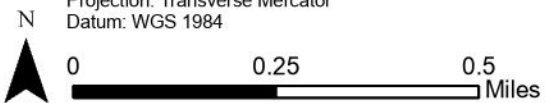
# ARMIJO CANYON AREA TRAILS | SANDIA RANGER DISTRICT | Cibola NF&NGs



Coordinate System: WGS 1984 UTM Zone 13N  
Projection: Transverse Mercator  
Datum: WGS 1984

Date: 5/21/2025

USDA is an equal opportunity provider, employer and lender



This product is reproduced from geospatial information prepared by the USDA Forest Service. Geospatial information and GIS product accuracy may vary. Using GIS products for purposes other than those for which they were created may yield inaccurate or misleading results. USDA Forest Service reserves the right to correct, update, modify or replace GIS products without notification