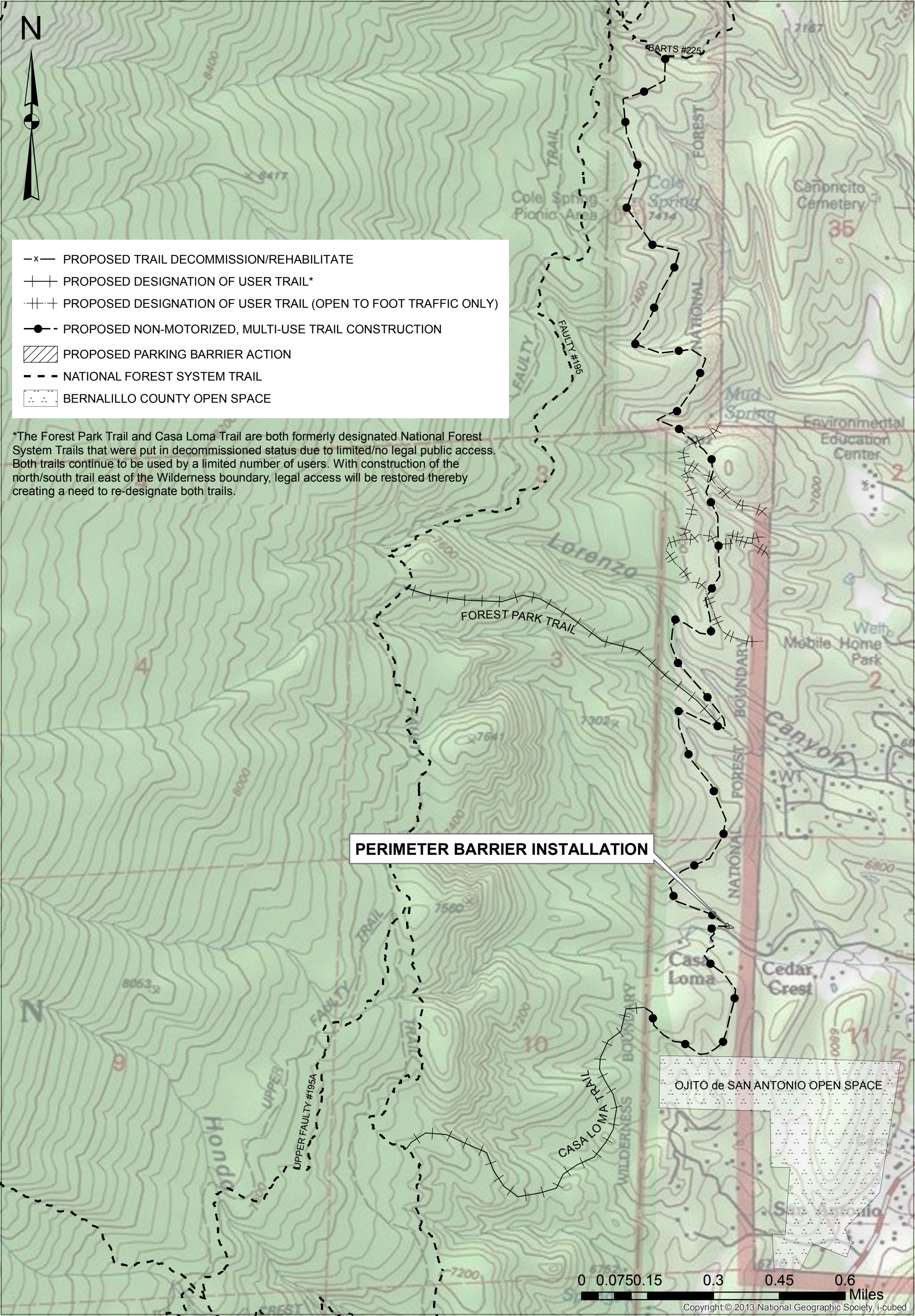




- x- PROPOSED TRAIL DECOMMISSION/REHABILITATE
- + + PROPOSED DESIGNATION OF USER TRAIL\*
- + + + PROPOSED DESIGNATION OF USER TRAIL (OPEN TO FOOT TRAFFIC ONLY)
- PROPOSED NON-MOTORIZED, MULTI-USE TRAIL CONSTRUCTION
- ▨ PROPOSED PARKING BARRIER ACTION
- - - NATIONAL FOREST SYSTEM TRAIL
- ⋯ BERNALILLO COUNTY OPEN SPACE

\*The Forest Park Trail and Casa Loma Trail are both formerly designated National Forest System Trails that were put in decommissioned status due to limited/no legal public access. Both trails continue to be used by a limited number of users. With construction of the north/south trail east of the Wilderness boundary, legal access will be restored thereby creating a need to re-designate both trails.



**PERIMETER BARRIER INSTALLATION**

OJITO de SAN ANTONIO OPEN SPACE



Copyright © 2013 National Geographic Society, i-cubed

# SANDIA TRAILS IMPROVEMENTS PROJECT

MAP 5 OF 5 NAD 83 1:12,000

The Cibola National Forest uses the most current database available. Updates occur as new information becomes available. No warranties are made regarding the accuracy of these data.

